


## 9, Flat 3 Netherwood Road, Hammersmith, London, W14 0BL

Price Reduced £1,800 pcm



 2 Bedrooms

 1 Bathroom

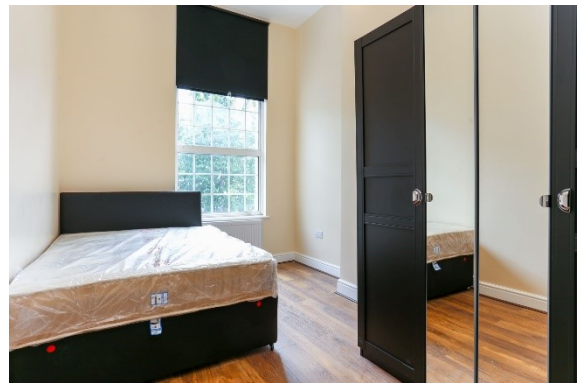
 1 Reception Room

### Property Description

- 2 Large Bedrooms
- Modern Integrated Kitchen
- Great transport links
- Gas Central Heating
  - New Appliances
- Close to Westfield
  - Washer/Dryer
  - Dishwasher

## 9, Flat 3 Netherwood Road, Hammersmith, London, W14 0BL

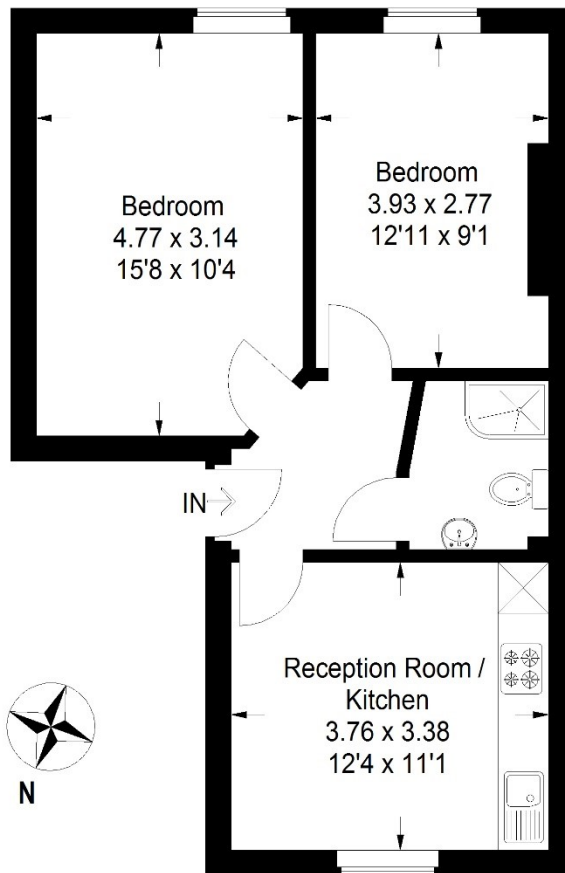
Price Reduced £1,800 pcm



## 9, Flat 3 Netherwood Road, Hammersmith, London, W14 0BL

### Flat 3, Netherwood Road

Approximate Gross Internal Area  
47.3 sq m / 509 sq ft



### First Floor

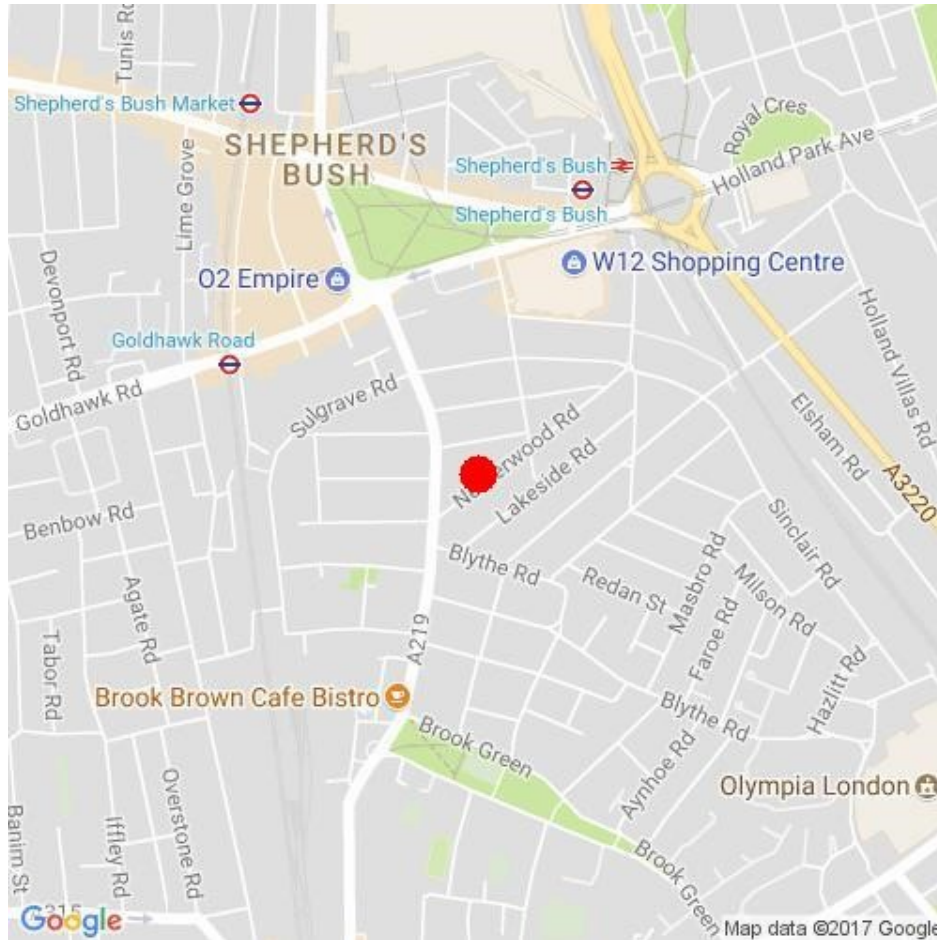
Illustration for identification purposes only,  
measurements are approximate, not to scale.




Scan this QR code to view more details on this property  
on our website

# 9, Flat 3 Netherwood Road, Hammersmith, London, W14 0BL

Price Reduced £1,800 pcm



Energy Efficiency Rating		
	Current	Potential
Very energy efficient - lower running costs		
(92 Plus) <b>A</b>		
(81-91) <b>B</b>		
(69-80) <b>C</b>	72	75
(55-68) <b>D</b>		
(39-54) <b>E</b>		
(21-38) <b>F</b>		
(1-20) <b>G</b>		
Not energy efficient - higher running costs		
<b>England &amp; Wales</b>	EU Directive 2002/91/EC	

Environmental Impact (CO <sub>2</sub> ) Rating		
	Current	Potential
Very environmentally friendly - lower CO <sub>2</sub> emissions		
(92 Plus) <b>A</b>		
(81-91) <b>B</b>		
(69-80) <b>C</b>	72	78
(55-68) <b>D</b>		
(39-54) <b>E</b>		
(21-38) <b>F</b>		
(1-20) <b>G</b>		
Not environmentally friendly - higher CO <sub>2</sub> emissions		
<b>England &amp; Wales</b>	EU Directive 2002/91/EC	