

35a Mill Hill Road, London, W3 8JE

Offers in Excess of Price £455,000



1 Bedroom



1 Bathroom



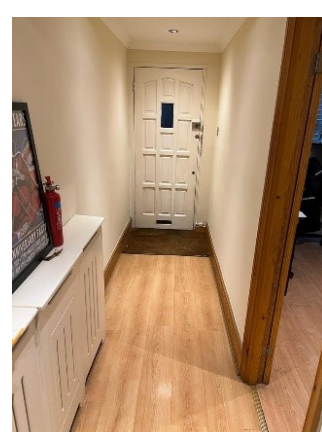
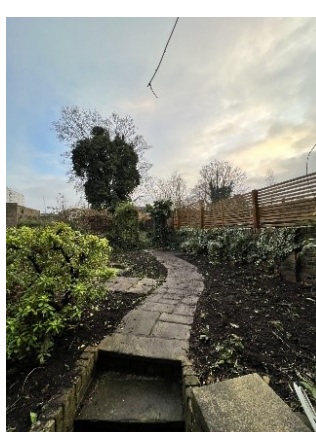
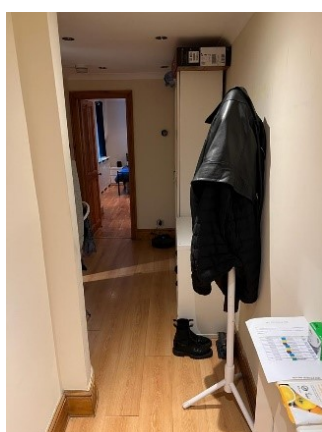
1 Reception Room

Property Description

- Period Conversion
- South Facing Private Garden
 - Long Lease
 - Close to Transport
- Subject to Planning - conversion to a 2 bed flat
 - Approx 149 Years Remaining
- £500 bi-annual charge to maintain building and grounds

35a Mill Hill Road, London, W3 8JE

Price £455,000



iProperties Ltd are pleased to present this beautiful large period conversion garden flat situated in a popular residential street, walking distance to Acton Town Station. This excellent property features a bright lounge, double bedroom, contemporary fully fitted separate kitchen, modern bathroom and a rare to find private garden.

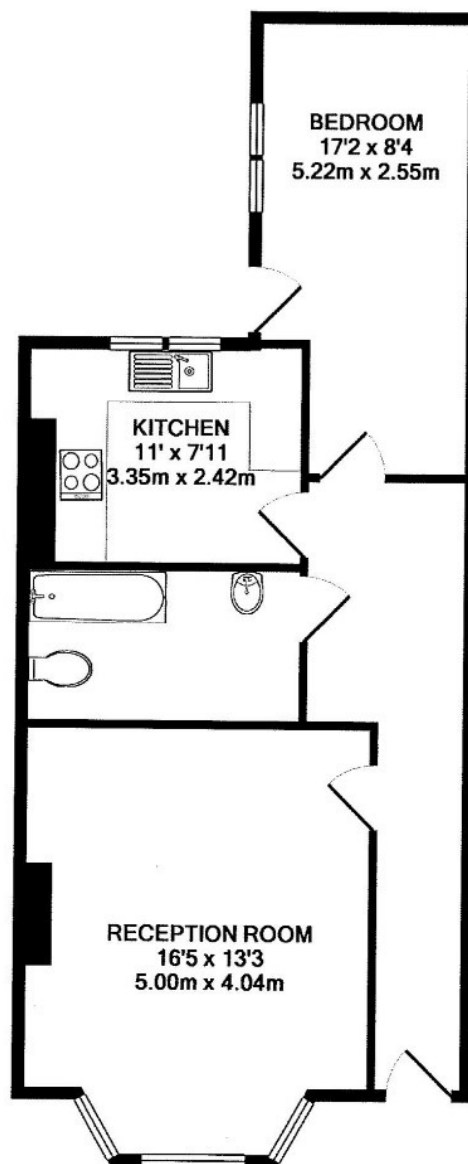
The property is superbly positioned for access to Acton Town Tube Station (District & Piccadilly Lines, 0.3 Miles away) for Heathrow and the City including various shopping and dining amenities of Chiswick and Ealing.

Plans have been drawn for converting the property into a two bed flat - Subject to Planning

35a Mill Hill Road, London, W3 8JE

Price £455,000

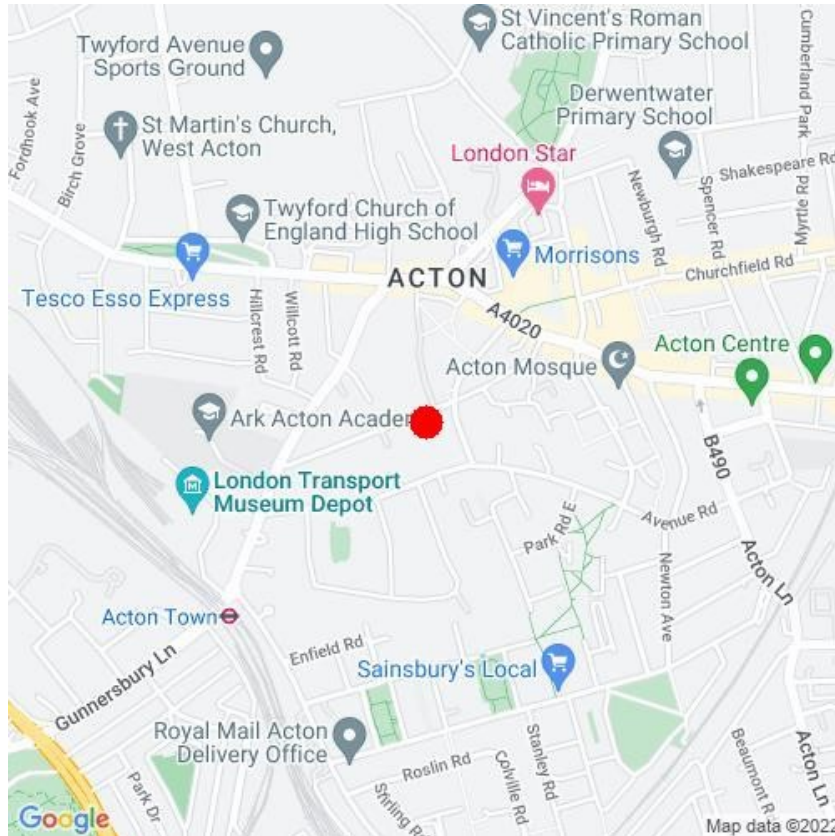
Mill Hill Road, Acton, W3 8JE




MILL HILL ROAD W3
TOTAL APPROX. FLOOR AREA 605 SQ.FT. (56.2 SQ.M.)

35a Mill Hill Road, London, W3 8JE

Price £455,000



Energy Efficiency Rating		
	Current	Potential
Very energy efficient - lower running costs		
(92 Plus) A		
(81-91) B		
(69-80) C		
(55-68) D	68	80
(39-54) E		
(21-38) F		
(1-20) G		
Not energy efficient - higher running costs		
England & Wales	EU Directive 2002/91/EC	



Scan this QR code to view more details on this property on our website