

JOWEBSTER

Harbour Reach, Imperial Wharf, SW6





Harbour Reach, Imperial Wharf, SW6

Situated on the sixth floor of the Sought-After Harbour Reach Building in Imperial Wharf, this well-proportioned two-bedroom apartment offers over 980 sq. ft of internal space and a private balcony with views across the landscaped communal areas. The apartment comprises a generous reception room with floor-to-ceiling windows, a fully equipped kitchen, two double bedrooms, each with built in storage and two bathrooms, including one en-suite.

The apartment benefits from a bright and airy layout, a spacious entrance hall, and excellent storage throughout. The private balcony provides space for outdoor seating, ideal for enjoying the riverside setting.

Imperial Wharf is a luxury riverside development by St George, offering 24-hour concierge, a resident' gym, landscaped gardens, and on-site amenities including cafes and restaurants. Positioned on the north bank of the River Thames next to Chelsea Harbour, the development is within walking distance of Imperial Wharf Overground station and the Thames Clipper riverboat service at Chelsea Harbour Pier, providing excellent transport links to Central London.



Property Attributes

- Reception room
- Separate Kitchen
- Private Balcony
- Two Bedrooms
- Two Bathrooms (One En Suite)
- Gym

Terms

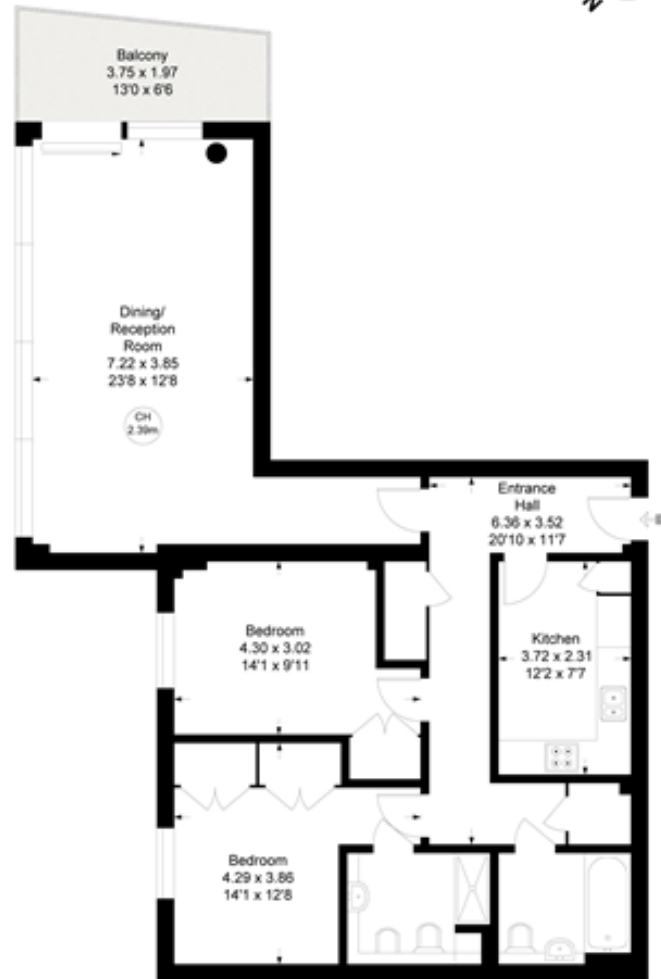
- £795,000
- Estimated Service Charge (2025): £8,869.00 per annum
- Estimated Ground Rent (2025): £500 per annum
- Leasehold
- Council Tax Band G



HARBOUR REACH, SW6

Approximate gross internal area = 1009 sq ft / 93.72 sq m

Key:
CH - Ceiling Height



Sixth Floor

Not to scale, for guidance only and must not be relied upon as a statement of fact.
All measurements and areas are approximate only

+44 (0)20 7349 7055
sales@jowebster.com
www.jowebster.com

Important Notice

These sales particulars are believed to be correct, but their accuracy is not guaranteed, nor do they form any part of a contract. We have not carried out a detailed survey nor tested services, appliances or fittings.

Purchasers must satisfy themselves by inspection or otherwise.