

Redwood Mansions, Kensington Green, W8

**JOWEBSTER**





## Redwood Mansions, Kensington Green, W8

A double aspect 2 bedroom apartment on the first floor of Redwood Mansions, in the gated development of Kensington Green.

Redwood Mansions is positioned centrally and faces Abbots Walk gardens to the north and Chantry Square gardens to the south. The apartment space is 1108 sq,ft in total with plentiful natural light throughout. Comprising of a separate kitchen, reception room, two bedrooms, both benefitting from Juliette balconies, one en-suite bathroom in the master bedroom and an additional guest bathrooms off the hallway.

Kensington Green is a prestigious development near the amenities and transport links of High Street Kensington. The development offers 24 hour security and concierge, underground car parking, landscaped gardens and a resident only gymnasium.

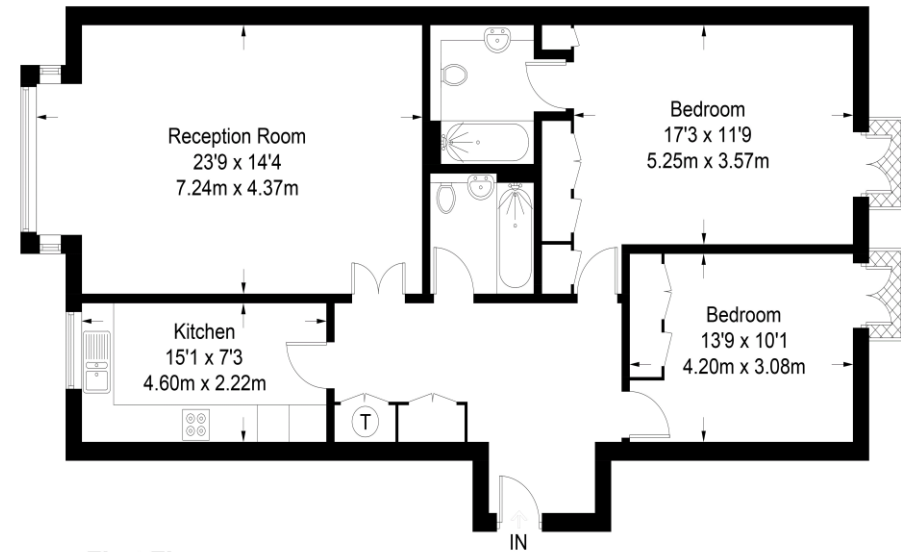
### Property Attributes

- Reception/Dining Room
- Kitchen
- Master Bedroom with En Suite Bathroom
- Second Bedroom
- Second Bathroom
- Juliette Balconies
- One Underground Car Parking Space
- 24 Hour Security and Concierge
- Gymnasium
- Landscaped Gardens

### Terms

- £1,995,000
- Share of Freehold (999 Years from Sept.'91)
- Royal Borough of Kensington & Chelsea
- Service Charge - £10,800 pa (Approx 2023)
- Ground Rent - £300 pa (Approx 2023)
- Council Tax Band G

**Redwood Mansions**  
Approximate Gross Internal Area = 1108 sq ft / 102.9 sq m



**First Floor**

Not to scale, for guidance only and must not be relied upon as a statement of fact. All measurements and areas are approximate only and have been prepared in accordance with the current edition of the RICS Code of Measuring Practice.

+44 (0)20 7349 7055  
sales@jowebster.com  
www.jowebster.com

Important Notice  
These sales particulars are believed to be correct, but their accuracy is not guaranteed, nor do they form any part of a contract. We have not carried out a detailed survey nor tested services, appliances or fittings. Purchasers must satisfy themselves by inspection or otherwise.