

Aspen Lodge, Kensington Green, W8

JOWEBSTER





Aspen Lodge, Kensington Green, W8

A wonderful third floor two bedroom apartment within Aspen Lodge, located in the prestigious Kensington Green development. The apartment is very well presented and comprises of 1002 sq.ft living space with double doors opening onto a Juliette balcony from the reception room. The spacious south facing reception benefits from beautiful views looking over Stone Hall and the landscaped gardens.

The property further benefits from a fully fitted kitchen, two double bedrooms, one with an en-suite bathroom plus a separate shower room both with windows. Both bedrooms have double doors opening out onto picturesque balconies.

Kensington Green benefits from private landscaped gardens, 24 hour security, secure underground car parking and a gymnasium. It is well situated within close proximity to the facilities of Kensington High Street and its many amenities.

Property Attributes

- Reception Room
- Kitchen
- Two Double Bedrooms
- Master En Suite
- Separate Shower Room
- Landscaped Gardens
- Concierge
- Underground Car Parking

Terms

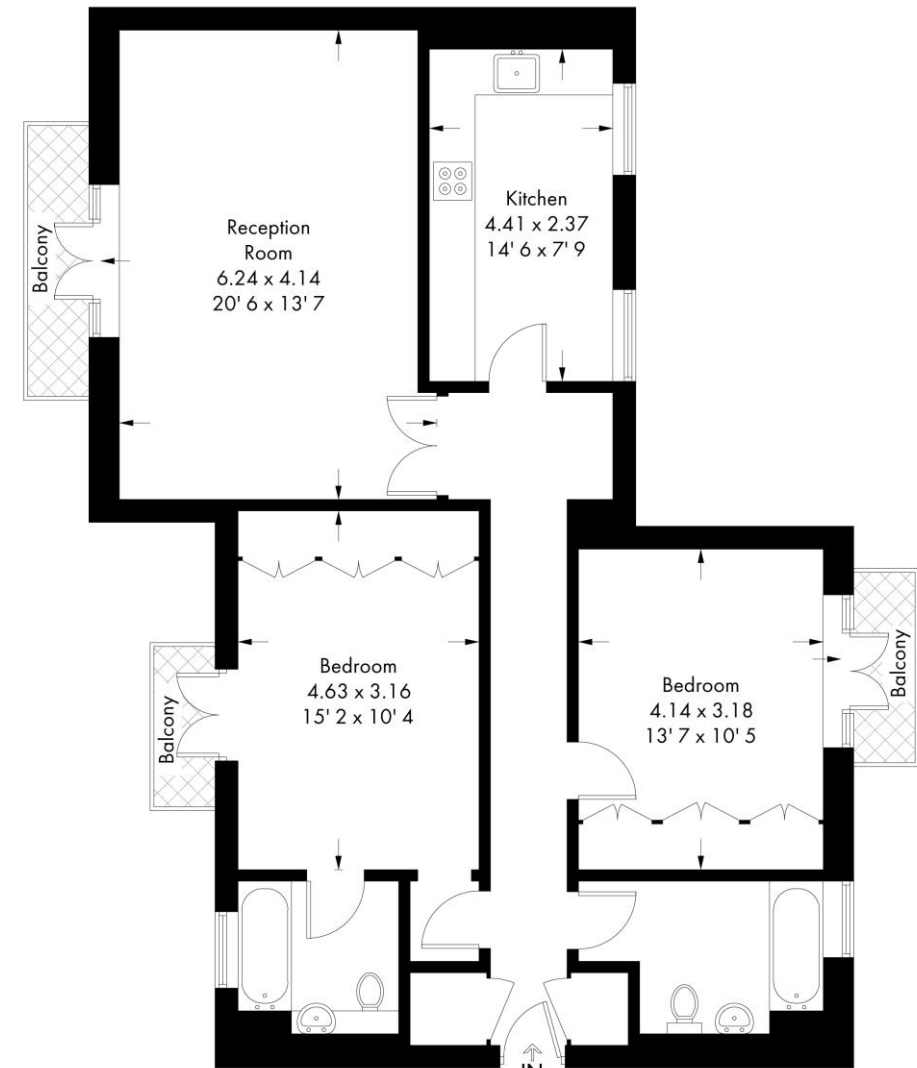
- £2,050,000
- Share of Freehold (999 Years from Sept. '91)
- Royal Borough of Kensington & Chelsea
- Estimated Service Charge £9,628 pa (2022)
- Estimated Ground Rent £150 pa (2022)
- Council Tax Band H

+44 (0)20 7349 7055
 sales@jowebster.com
 www.jowebster.com

Important Notice
 These sales particulars are believed to be correct, but their accuracy is not guaranteed, nor do they form any part of a contract. We have not carried out a detailed survey nor tested services, appliances or fittings. Purchasers must satisfy themselves by inspection or otherwise.

Aspen Lodge

Approximate Gross Internal Area = 1002 sq ft / 93.1 sq m
 Including Limited Use Area = 11 sq ft / 1 sq m



Third Floor

This plan is not to scale and must be used as layout guidance only. All measurements and areas are approximate and should not be relied upon to provide accurate information. This plan must not be relied upon when making property valuations, design considerations or any other such relevant decisions. We accept no responsibility or liability (whether in contract, tort or otherwise) in relation to any loss whatsoever arising from or in connection with any use of this plan or the adequacy, accuracy or completeness of it or any information within it.