

Magnolia Lodge,  
Kensington Green, W8

**JOWEBSTER**





## Magnolia Lodge, Kensington Green, W8

A wonderful bright and spacious apartment on the second floor of Magnolia Lodge. Comprising 1001 sq ft of living space, the property benefits from two bedrooms with built in storage and Juliette balconies providing wonderful garden views, a spacious living room, separate kitchen, two bathrooms and is finished to a high standard throughout.

Kensington Green is a sought after, gated development with 24-hour security and porterage, communal landscaped gardens, a gymnasium and underground parking.

The development is ideally located for the shops, restaurants and transport links provided by Kensington High Street and benefits from close proximity to the open spaces of Kensington gardens and Holland Park.

### Property Attributes

- Two Bedrooms
- Two Bathrooms (One En-suite)
- Kitchen
- Reception Room
- Communal Gardens
- 24-Hour Concierge and Security
- Resident Only Gym
- Underground Parking

### Terms

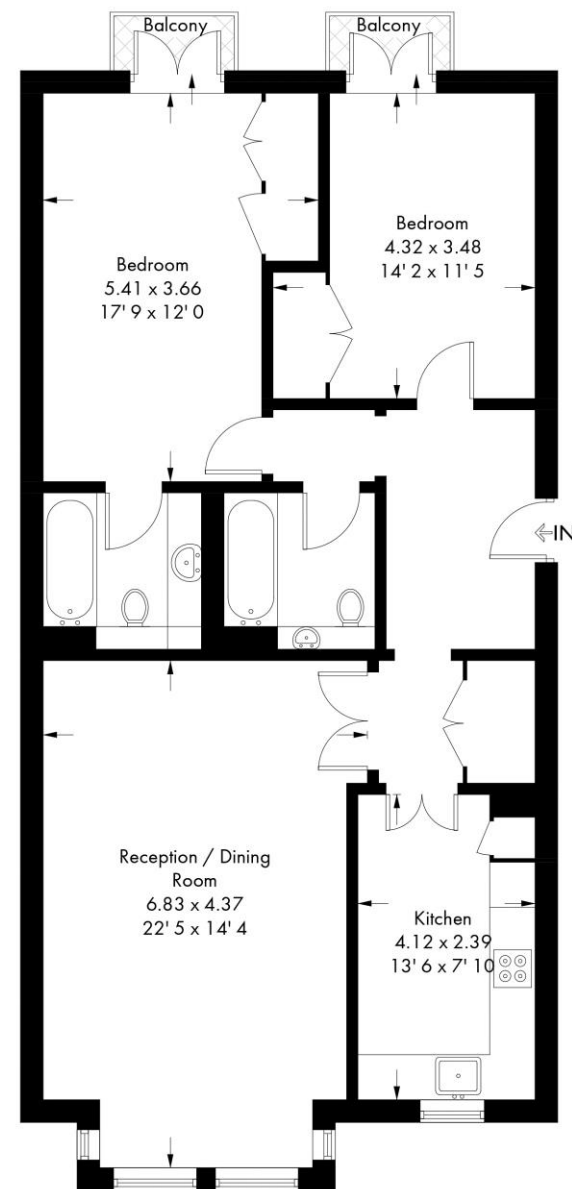
- £1,900,000
- Leasehold (999 Years from Sept.'91)
- Royal Borough of Kensington & Chelsea
- Service Charge £7,809.54 p.a (approx 2020)
- Ground Rent £150 p.a (approx. 2020)

+44 (0)20 7349 7055  
[sales@jowebster.com](mailto:sales@jowebster.com)  
[www.jowebster.com](http://www.jowebster.com)

Important Notice  
 These sales particulars are believed to be correct, but their accuracy is not guaranteed, nor do they form any part of a contract. We have not carried out a detailed survey nor tested services, c  
 Purchasers must satisfy themselves by inspection or otherwise.

## Magnolia Lodge

Approximate Gross Internal Area = 1001 sq ft / 93 sq m



Second Floor

Not to scale, for guidance only and must not be relied upon as a statement of fact  
 All measurements and areas are approximate only and have been prepared in  
 accordance with the current edition of the RICS Code of Measuring Practice