



JOWEBSTER

Devonshire Place
Kensington Green, W8



Property Attributes

- 2 Reception Rooms
- Dining Room
- Kitchen
- Four Bedrooms (Two En-suite Bathrooms)
- Family Bathroom
- Rear Private Terrace Leading onto Communal Garden
- 2 Secure Car Parking Spaces
- Landscaped Gardens
- Gym
- 24 Hour Security



Terms

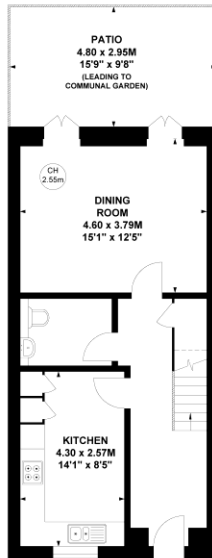
- Price: £3,500,000
- Borough: Royal Borough of Kensington And Chelsea
- Tenure: Freehold
- Service Charge: Approx. £8,700 Per Annum
- Council Tax Band: H



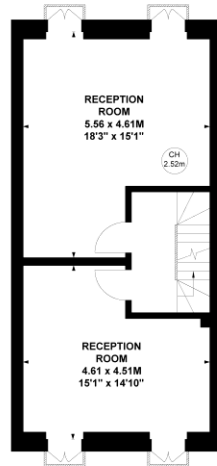
Devonshire Place, W8

Approximate gross internal area
174.02 sq m / 1873 sq ft

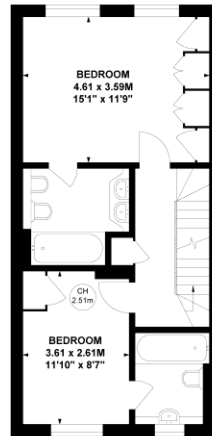
Key :
CH - Ceiling Height



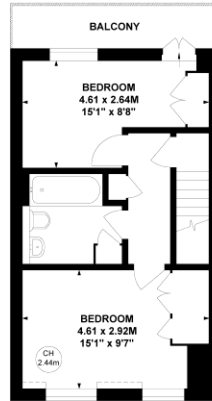
Ground Floor



First Floor



Second Floor



Third Floor

This plan is not to scale and must be used as layout guidance only. All measurements and areas are approximate and should not be relied upon to provide accurate information. This plan must not be relied upon when making property valuations, design considerations or any other such relevant decisions. We accept no responsibility or liability (whether in contract, tort or otherwise) in relation to any loss whatsoever arising from or in connection with any use of this plan or the adequacy, accuracy or completeness of it or any information within it.

+44 (0) 20 7349 7055
sales@jowebster.com

Misdescription Act

We wish to advise prospective purchasers that these sales particulars are believed to be correct, but their accuracy is in no way guaranteed, nor do they form any part of contract. We have not carried out a detailed survey nor tested the services, appliances or specific fittings. Measurements are approximate.