

Sycamore Lodge, Kensington Green, W8

JOWEBSTER





Sycamore Lodge, Kensington Green, W8

A larger than average two/three bedroom apartment situated on the first floor of this popular apartment building within Kensington Green.

The apartment comprises 1,315 sq ft (122 sq m) and offers a spacious accommodation in a good condition. A double aspect reception room with large bay windows and two sets of double doors opening out onto two separate west facing balconies. The apartment also benefits from a separate kitchen and two double bedrooms; it was originally a three bedroom apartment but it has now been upgraded to create a larger than average two bedroom with a spacious walk in dressing room.

There are two bathrooms and the apartment comes with one secure underground car parking space.

Kensington Green is ideally located for the amenities of Kensington High Street and is a short walk from the open spaces of Kensington Gardens.

The development benefits from underground parking, 24 hour security, landscaped gardens and leisure facilities.

Property Attributes

- Double Aspect Reception Room
- Fully Fitted Kitchen
- Three Bedrooms
- Two Bathrooms
- 24 Hour Security & Concierge
- Landscaped Gardens
- Gym
- Secure Underground Car Parking

Terms

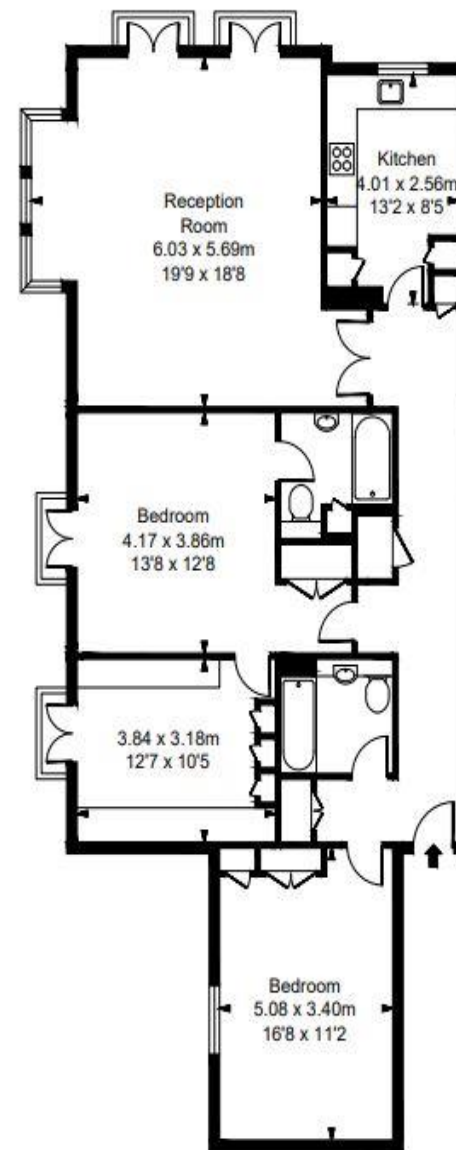
- £2,300,000
- Share of Freehold (999 Years from Sept. '91)
- Royal Borough of Kensington & Chelsea
- Estimated Service Charge £12,915.20 pa (2022)
- Estimated Ground Rent £200 pa (2022)
- Council Tax Band H

+44 (0)20 7349 7055
 sales@jowebster.com
 www.jowebster.com

Important Notice
 These sales particulars are believed to be correct, but their accuracy is not guaranteed, nor do they form any part of a contract. We have not carried out a detailed survey nor tested services, appliances or fittings. Purchasers must satisfy themselves by inspection or otherwise.

Sycamore Lodge, W8

Approximate Gross Internal Area
 122.14 sq m / 1315 sq ft



First Floor

ILLUSTRATION FOR IDENTIFICATION PURPOSES ONLY
 ALL MEASUREMENTS ARE MAXIMUM, AND INCLUDE WINDOW BAYS AND WARDROBES WHERE APPLICABLE
 THIS PLAN MUST NOT BE REPRODUCED BY ANY OTHER PERSON WITHOUT PERMISSION.