

JOWEBSTER

Chestnut Court, Kensington Green, W8





Chestnut Court, Kensington Green, W8

Located on the third floor of Chestnut Court within the highly sought-after Kensington Green development, this well-proportioned two-bedroom apartment offers approximately 1,130 sq ft (104.98 sqm) of elegant living space.

The property comprises a generous reception room, ideal for entertaining, alongside a separate fully-fitted kitchen. The master bedroom features a built-in wardrobe and a private en suite bathroom, while the second double bedroom also includes built-in storage and is conveniently positioned adjacent to the family bathroom.

Residents of Kensington Green enjoy a wealth of amenities including 24-hour security, portage, beautifully landscaped communal gardens, and exclusive access to a private leisure complex. The development is ideally situated within close proximity to a wide selection of shops, cafés, and restaurants, offering the perfect blend of comfort, convenience, and lifestyle.



Property Attributes

- Reception Room
- Kitchen
- Master Bedroom with Ensuite
- Second Bedroom
- Family Bathroom
- Gym
- 24 Hour Security
- Landscaped Gardens

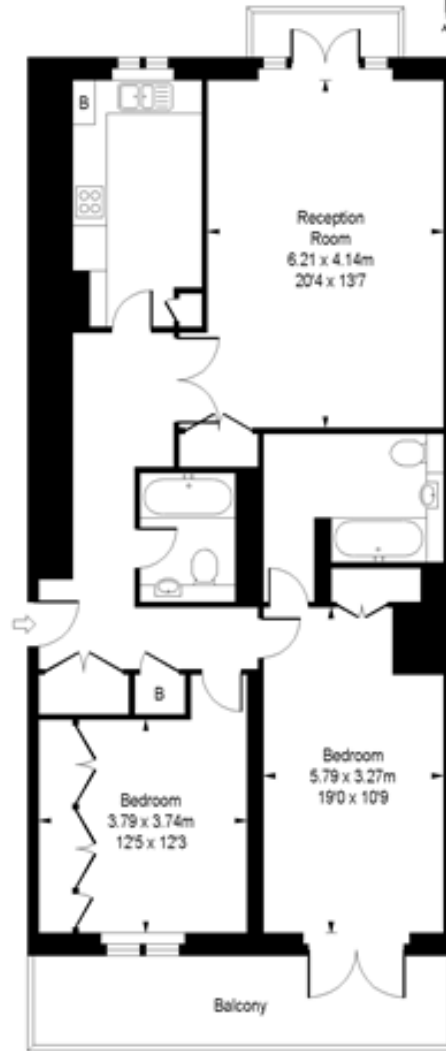
Terms

- £2,000,000
- Royal Borough of Kensington And Chelsea
- Share of Freehold (999 Years from September 91')
- Service charge TBC
- Ground rent TBC
- Council Tax Band H



Chestnut Court,
Kensington Green, W8

Approximate Gross Internal Area
1130 sq ft / 104.98 sq m



Third Floor

ILLUSTRATION FOR IDENTIFICATION PURPOSES ONLY

ALL MEASUREMENTS ARE MAXIMUM, AND INCLUDE WINDOW BAYS AND WARDROBES WHERE APPLICABLE
THIS PLAN MUST NOT BE REPRODUCED BY ANY OTHER PERSON WITHOUT PERMISSION

+44 (0)20 7349 7055
sales@jowebster.com
www.jowebster.com

Important Notice

These sales particulars are believed to be correct, but their accuracy is not guaranteed, nor do they form any part of a contract. We have not carried out a detailed survey nor tested services, appliances or fittings.
Purchasers must satisfy themselves by inspection or otherwise.