

Bailey House, Coleridge Gardens, SW10

JOWEBSTER





Bailey House, Coleridge Gardens, SW10

A wonderful two bedroom apartment comprising 1,020 sq ft of living space which is situated on the first floor of Bailey House. The apartment benefits from a spacious reception room with large windows and a door opening out onto a large balcony. The apartment further includes an open plan kitchen, two bedrooms, two bathrooms (one en-suite) and one car parking space.

Kings Chelsea is a much sought-after development benefiting from 24 hour security and concierge services, leisure centre and indoor swimming pool, as well as landscaped gardens, a tennis court and underground car parking.

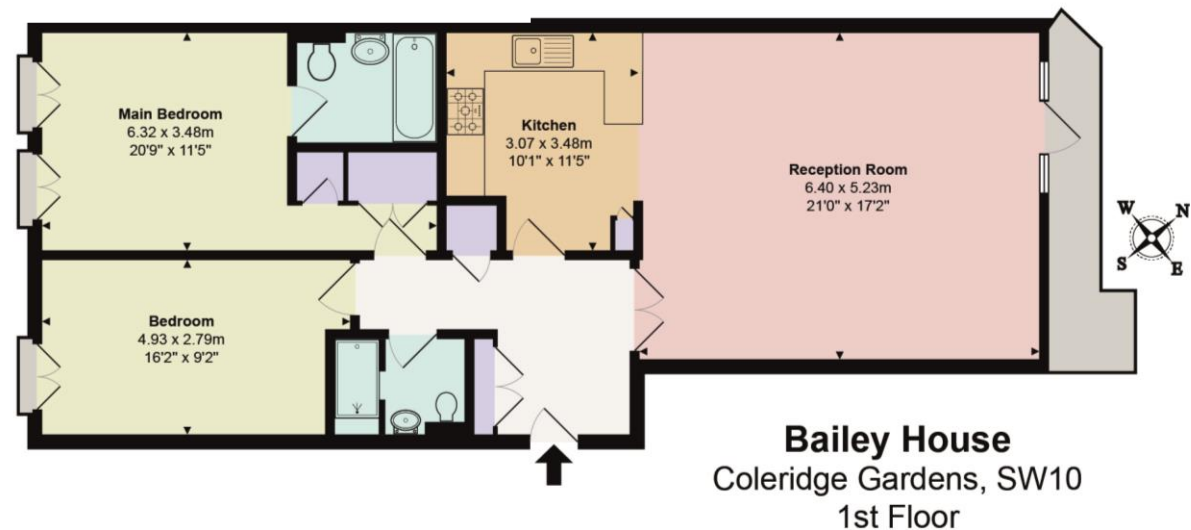
The development is ideally located between Fulham Road and Kings Roads in Chelsea, with numerous shops and restaurants, as well as rail, bus and river boat transport links within walking distance.

Property Attributes

- Two Bedrooms
- Two Bathrooms (one ensuite bathroom)
- Reception Room
- Kitchen
- Secure Car Parking
- 24 Hour Security & Concierge
- Swimming Pool & Leisure Facilities
- Tennis Court
- Landscaped Gardens

Terms

- £1,325,000
- Leasehold (999 Years from January 2001)
- Royal Borough of Kensington & Chelsea
- Estimated Service Charge £10,097.18 pa (2023)
- Estimated Ground Rent £100 pa (2023)
- Council Tax Band G



Total Internal Gross Area:
94.76 sq m / 1020 sq ft

This plan is for illustration purposes only and not to scale.
It is for guidance and not valuation purposes.
All measurements and areas are approximate only.

+44 (0)20 7349 7055
sales@jowebster.com
www.jowebster.com

Important Notice

These sales particulars are believed to be correct, but their accuracy is not guaranteed, nor do they form any part of a contract. We have not carried out a detailed survey nor tested services, appliances or fittings. Purchasers must satisfy themselves by inspection or otherwise.