

# JOWEBSTER

The Montevetro Building, Battersea, SW11







## The Montevetro Building, Battersea, SW11

We are delighted to present this exceptional three-bedroom lateral apartment in the renowned Montevetro Building, Battersea. Measuring approximately 2,013 sq ft, this beautifully designed residence offers an expansive living spaces with floor-to-ceiling windows.

At the heart of the home is a striking double-aspect reception and dining room extending over 34 ft, with full-height glazing that floods the space with natural light and frames captivating views. The separate kitchen and breakfast room is well appointed with modern appliances and opens directly onto a private balcony. The principal bedroom suite is a standout feature, boasting floor-to-ceiling windows, fitted wardrobes, and an en suite bathroom. Adjoining this space is a versatile study area, offering the flexibility of a home office or quiet reading nook. Two further double bedrooms provide excellent accommodation, served by a family bathroom and an additional shower room, ensuring comfort and convenience throughout.

Montevetro remains one of London's most prestigious riverside developments, offering 24-hour concierge and security, a residents' gymnasium, tennis court, beautifully maintained gardens, and secure parking. Positioned moments from Battersea Bridge, the development enjoys superb access to Chelsea, the King's Road, and the open spaces of Battersea Park.

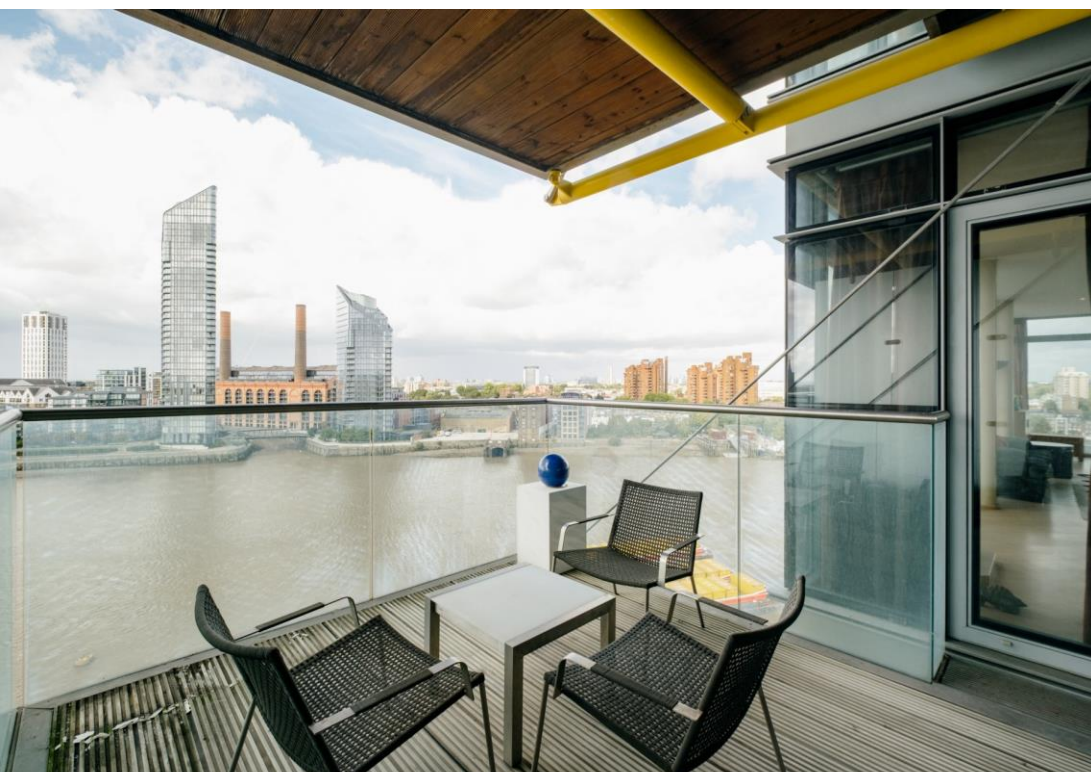
### Property Attributes

- Reception Room with River Views
- Kitchen
- Private Balcony
- Three Bedrooms
- Two Bathrooms (One En Suite)
- One Shower Room
- Study Room
- 1 x Car Parking Space
- Gym
- Tennis Court
- 24 Hour Security

### Terms

- £2,850,000
- Royal Borough of Wandsworth
- Share of Freehold
- Estimated Service Charge: £23,435 (2025)
- Ground rent: Peppercorn
- Council Tax Band H

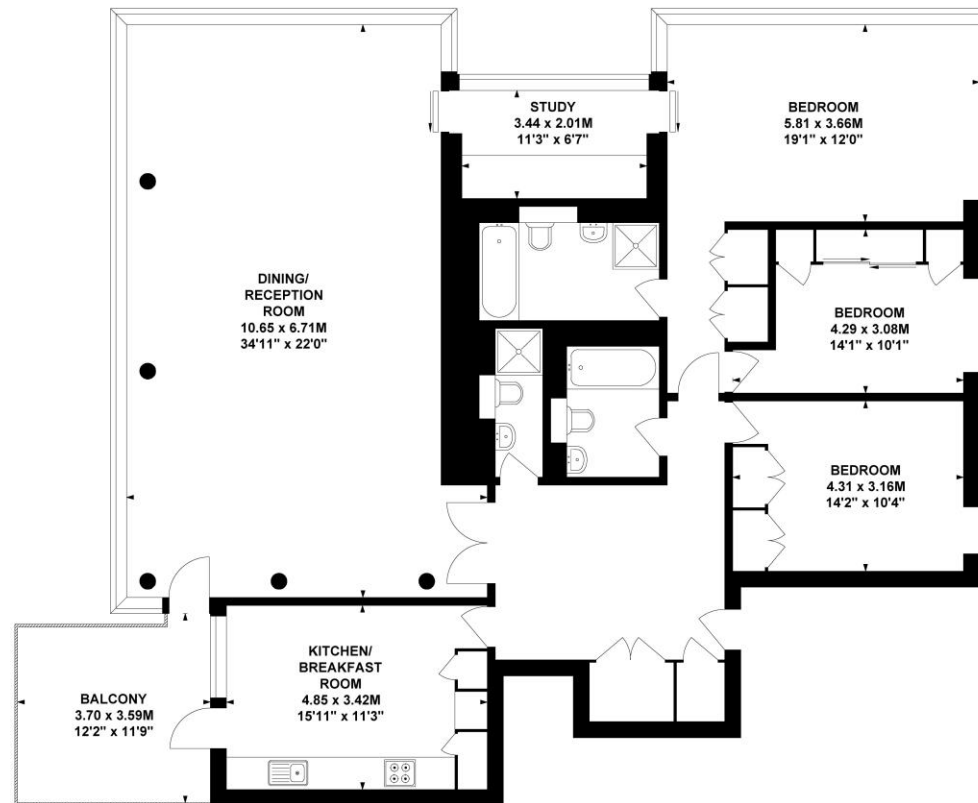




# MONTEVETRO, CHURCH ROAD, SW11

Approximate Gross Internal Area

185.87 sq m / 2001 sq ft



**Tenth Floor**

+44 (0)20 7349 7055  
sales@jowebster.com  
www.jowebster.com

**Important Notice**

These sales particulars are believed to be correct, but their accuracy is not guaranteed, nor do they form any part of a contract. We have not carried out a detailed survey nor tested services, appliances or fittings.

Purchasers must satisfy themselves by inspection or otherwise.