

JOWEBSTER

The Montevetro Building, Battersea, SW11





The Montevetro Building, Battersea, SW11

An exceptional three-bedroom riverside apartment set within the iconic Montevetro Building, one of Battersea's most prestigious developments. This stylish first-floor residence offers approximately 1,085 sq ft of contemporary living space, designed to maximise natural light and showcase stunning views of the River Thames.

The expansive open-plan kitchen and reception room measures over 22 feet in width, featuring floor-to-ceiling windows with a riverside backdrop. The generous principal bedroom benefits from ample built-in storage and en-suite facilities. Two further double bedrooms offer flexibility for guests, family, or a home office, supported by a well-appointed family bathroom.

Residents of the Montevetro Building enjoy 24-hour concierge, secure entry, and access to a fully equipped gym and tennis courts, all set within beautifully landscaped grounds along the river. Located moments from Battersea Square and within easy reach of Chelsea via Battersea Bridge, this superb apartment offers tranquil riverside living.

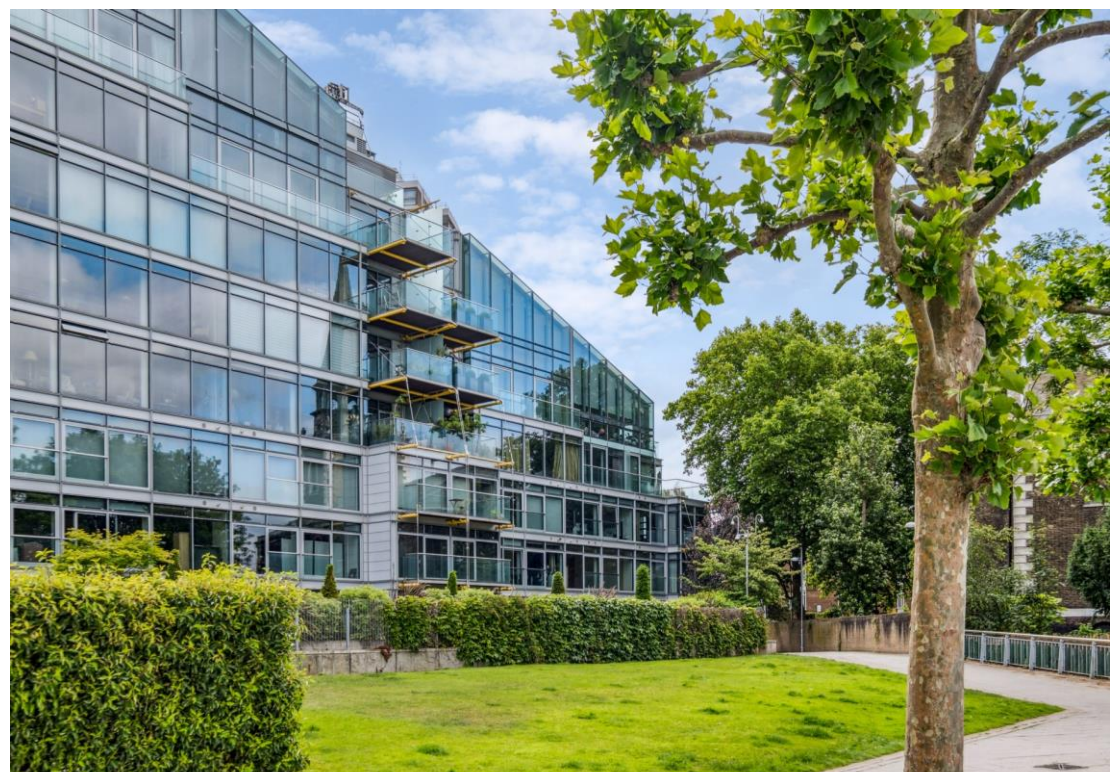


Property Attributes

- Reception Room with River Views
- Kitchen
- Three Bedrooms
- Two Bathrooms (One En Suite)
- Car Parking
- 24 Hour Security
- Gym
- Tennis Court

Terms

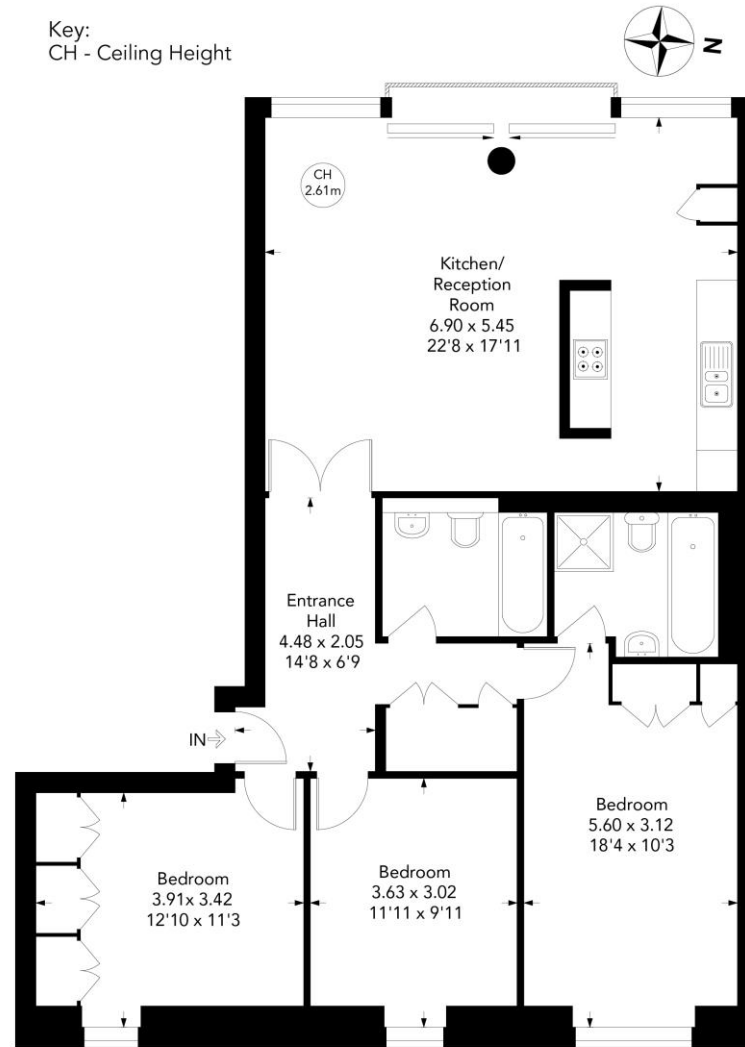
- £1,050,000
- London Borough of Wandsworth
- Share of Freehold (999 years from June 1997)
- Estimated Service Charge: £13,581 (inc sinking fund)
- Ground Rent: Peppercorn
- Council Tax Band H



THE MONTEVETRO BUILDING, SW11

Approximate gross internal area = 1085 sq ft / 100.79 sq m

Key:
CH - Ceiling Height



First Floor

Not to scale, for guidance only and must not be relied upon as a statement of fact.
All measurements and areas are approximate only

+44 (0)20 7349 7055
sales@jowebster.com
www.jowebster.com

Important Notice
These sales particulars are believed to be correct, but their accuracy is not guaranteed, nor do they form any part of a contract. We have not carried out a detailed survey nor tested services, appliances or fittings.
Purchasers must satisfy themselves by inspection or otherwise.