

# JOWEBSTER



Montevetro  
Battersea, SW11



# Montevetro

## London, SW11

A stunning two bedroom riverside apartment located on the fourth floor of the Richard Roger's designed Montevetro building. The apartment comprises 1337 square feet and is located at an ideal level to be in touch with the water but at the same time feeling private.

The reception room has floor to ceiling glass with west facing views across the Thames and has a door leading on to a west facing balcony. The fully fitted Bulthaup kitchen has ample space for a table and direct access to the balcony for easy outdoor dining.

There are two double bedrooms, two bathrooms (one en suite) and two secure underground car parking spaces. Montevetro benefits from 24 hour security, a leisure centre, all weather tennis court and tranquil private gardens. It is located close to Battersea Bridge and Battersea Square with a range of restaurants, cafes and other amenities.

### ACCOMMODATION

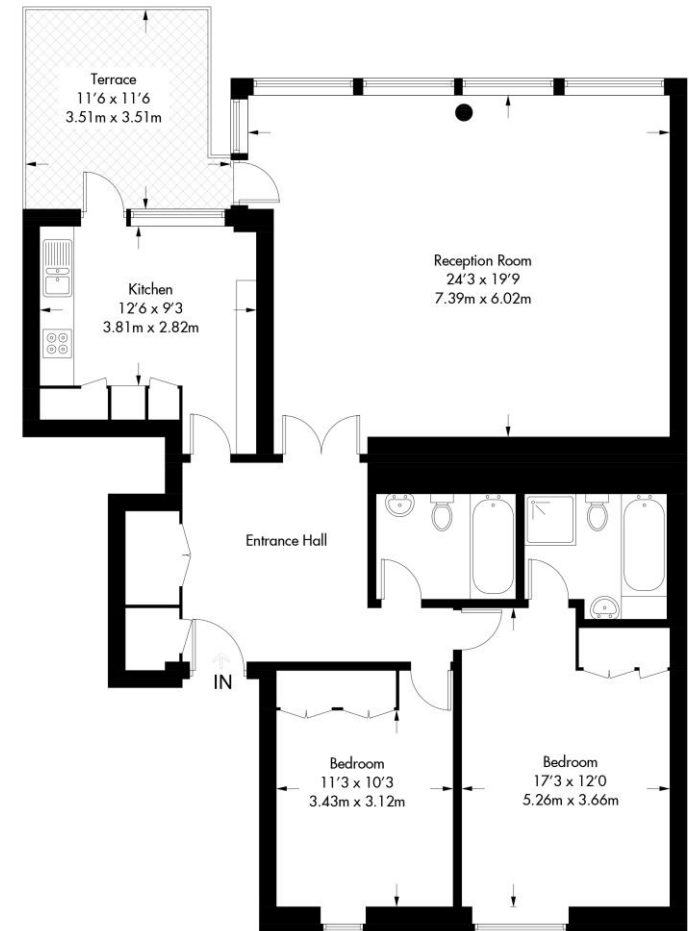
- Entrance Hall
- Reception Room
- Kitchen
- Balcony
- Master Bedroom with En Suite Bathroom
- Second Bedroom
- Second Bathroom
- Storage Cupboards
- Two Underground Car Parking Spaces
- 24 Hour Security and Concierge
- Leisure Centre
- All Weather Tennis Court
- Landscaped Gardens

### TERMS

- £1,975,000
- Share of Freehold
- Borough of Wandsworth
- Service Charge £9,898 pa (2018)

### Montevetro

Approximate Gross Internal Area = 124.2 sq m / 1337 sq ft



### Fourth Floor

Not to scale, for guidance only and must not be relied upon as a statement of fact. All measurements and areas are approximate only and have been prepared in accordance with the current edition of the RICS Code of Measuring Practice.

0207 349 7055  
[sales@jowebster.com](mailto:sales@jowebster.com)  
[www.jowebster.com](http://www.jowebster.com)

#### Misdescription Act

We wish to advise prospective purchasers that these sales particulars are believed to be correct, but their accuracy is in no way guaranteed, nor do they form any part of contract. We have not carried out a detailed survey nor tested the services, appliances or specific fittings. Measurements are approximate.

# JOWEBSTER