

The Montevetro Building, Battersea, SW11

**JOWEBSTER**







## The Montevetro Building Battersea, SW11

This impressive river facing two bedroom apartment is located on the eighth floor located in the iconic riverside building designed by the Richard Rogers Partnership, the Montevetro Building.

This apartment comprises 1,313 sq.ft (121.98 sq.m) of living space and benefits from a spacious entrance hallway with double doors leading through to the bright reception room with dining area and a separate kitchen overlooking the river. Additionally there is a west facing private balcony which leads off the kitchen and can also be accessed from the reception room.

There are two double bedrooms, the master bedroom benefits from an en suite bathroom. The second bedroom is currently being used as a study, both bedrooms overlook the tennis courts and benefits from the views towards the city. There is second bathroom and one car parking space and one storage unit are included.

On site facilities include 24-hour security, landscaped gardens, gymnasium with steam rooms, all-weather tennis court and lift access.

Montevetro is ideally located for the amenities of Battersea Square and is a short walk from Battersea Park. There is a river walkway directly in front of the secure landscaped gardens making the Kings Road and Chelsea only a short walk away.



### Property Attributes

- Entrance Hallway
- Reception/ Dining Area
- Kitchen
- Private Balcony
- Master Bedroom with En Suite Bathroom
- Second Bedroom
- Family Bathroom
- Lift Access
- Gym and Tennis Court
- 24 Hour Security and Concierge

### Terms

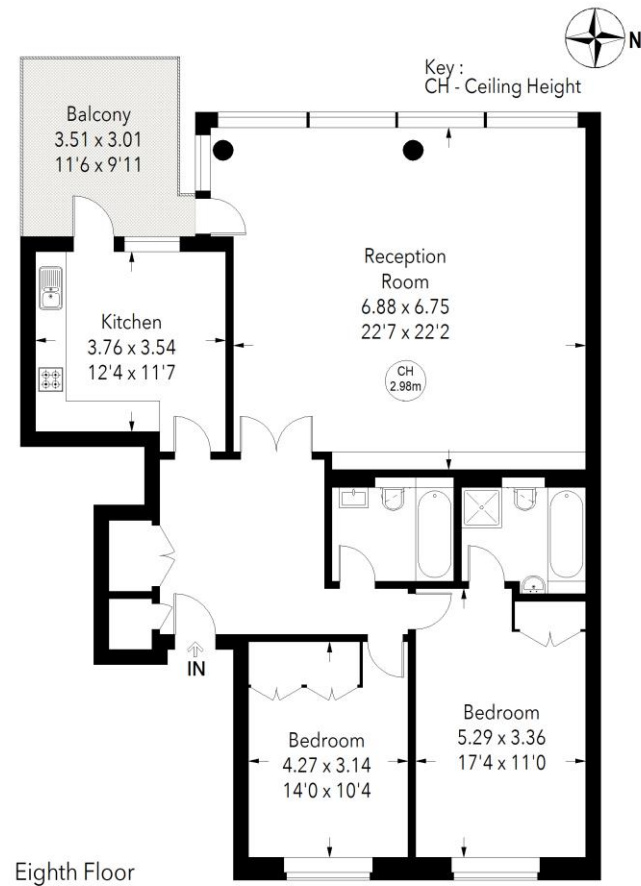
- £1,500,000
- London Borough of Wandsworth
- Share of Freehold (999 years from 24 June 1997)
- Estimated Service charge £14,000 per annum (2024)
- Council Tax Band G





# THE MONTEVETRO BUILDING, BATTERSEA CHURCH ROAD, SW11

Approximate gross internal area = 1313 sq ft / 121.98 sq m



Not to scale, for guidance only and must not be relied upon as a statement of fact.  
All measurements and areas are approximate only

+44 (0)20 7349 7055  
sales@jowebster.com  
www.jowebster.com

**Important Notice**  
These sales particulars are believed to be correct, but their accuracy is not guaranteed, nor do they form any part of a contract. We have not carried out a detailed survey nor tested services, appliances or fittings.  
Purchasers must satisfy themselves by inspection or otherwise.