

Montevetro, Battersea Church Road
London, SW11

JOWEBSTER





Apartment C15, The Montevetro Building, 100 Battersea Church Road, London, SW11 3YL

Fully renovated 3 bedroom property with exceptional views over the river Thames in what is considered the best riverside development south of the river.

The property comprises just under 1600 sqft (145.8sqm) of living space and features 3 bedrooms, 2 bathrooms, a separate utility room, open plan living room and state of the art kitchen.

The apartment further benefits from wooden floors and under floor heating, air cooling, Miele kitchen and appliances, as well as plentiful storage space throughout including custom built in wardrobes in all bedrooms. The apartment is offered with one secure parking space.

Property Attributes

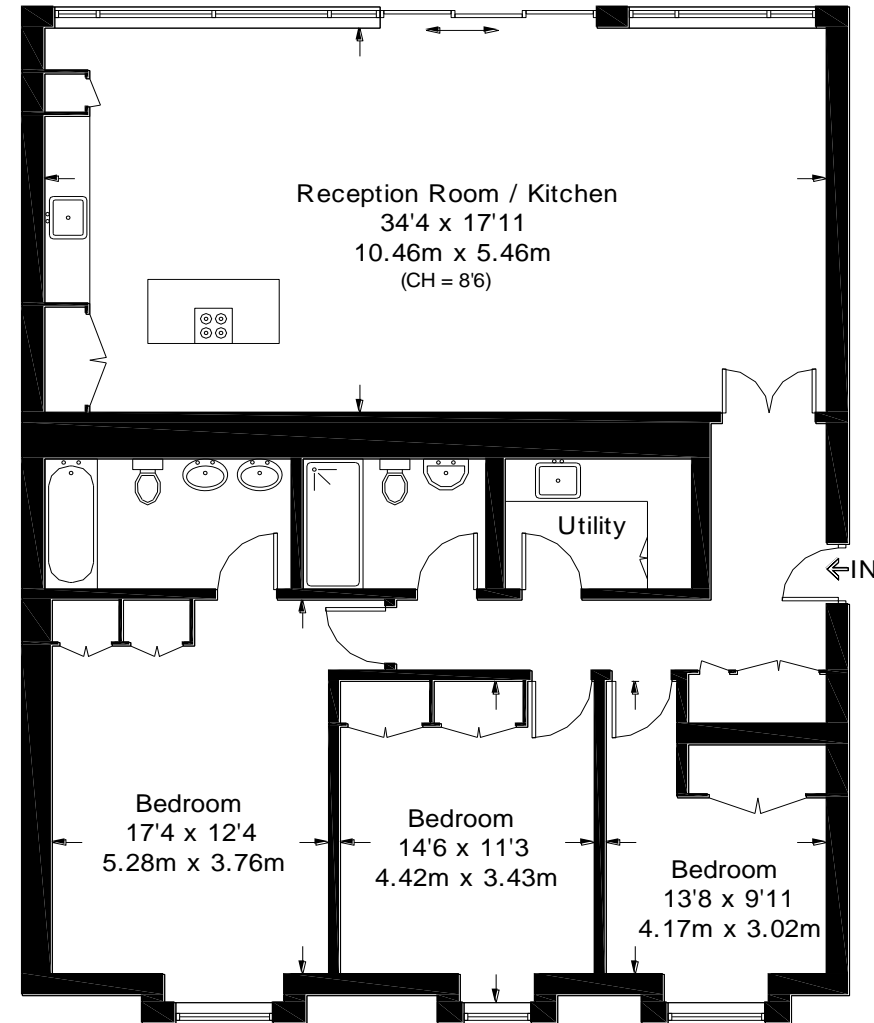
- Open Plan Reception/Kitchen/Dining Room
- Three Bedrooms (One En-Suite Bathroom)
- Family Bathroom
- Utility Room
- One Underground Car Parking Space
- 24 Hour Security and Concierge
- Landscaped Gardens
- Gymnasium (Residents Only)
- Tennis Court (All Weather)

Terms

- £2,225,000
- Share of Freehold (999 Years from Sept.'91)
- Borough of Wandsworth
- Estimated Service Charge £13,229.08 pa (Approx. 2022)
- Council Tax Band H

Montevetro

Approximate Gross Internal Area = 1570 sq ft / 145.8 sq m



First Floor

Not to scale, for guidance only and must not be relied upon as a statement of fact. All measurements and areas are approximate only and have been prepared in accordance with the current edition of the RICS Code of Measuring Practice.

+44 (0)20 7349 7055
sales@jowebster.com
www.jowebster.com

Important Notice
These sales particulars are believed to be correct, but their accuracy is not guaranteed, nor do they form any part of a contract. We have not carried out a detailed survey nor tested services, appliances or fittings. Purchasers must satisfy themselves by inspection or otherwise.