



The Montevetro Building
Battersea, SW1 1

JOWEBSTER



B22 Montevetro, 100 - 112 Battersea Church Road, London, SW11 3YL

A beautiful river facing apartment presented as a studio space but with a well defined reception room and bedroom area. The reception room leads on to a well fitted kitchen with Bulthaup units. The bedroom area leads on to a dressing area and glass panelled bathroom. The apartment benefits from spectacular river views from both the living and bedroom spaces and has glass sliding doors that lead on to the west facing balcony.

The Montevetro Building offers 24 hour security, parking, gym, tennis court and well laid out landscaped gardens. It is located close to Battersea Square and is a short walk from Battersea Park and Battersea Bridge.

The apartment comes with one secure underground car parking space.

Property Attributes

- Entrance Hall
- Reception Area
- Bedroom Area
- Kitchen
- Bathroom
- Balcony
- Car parking space

Terms

- £860,000
- Share of Freehold (999 Years from Sept. '91)
- Royal Borough of Kensington & Chelsea

+44 (0)20 7349 7055

sales@jowebster.com

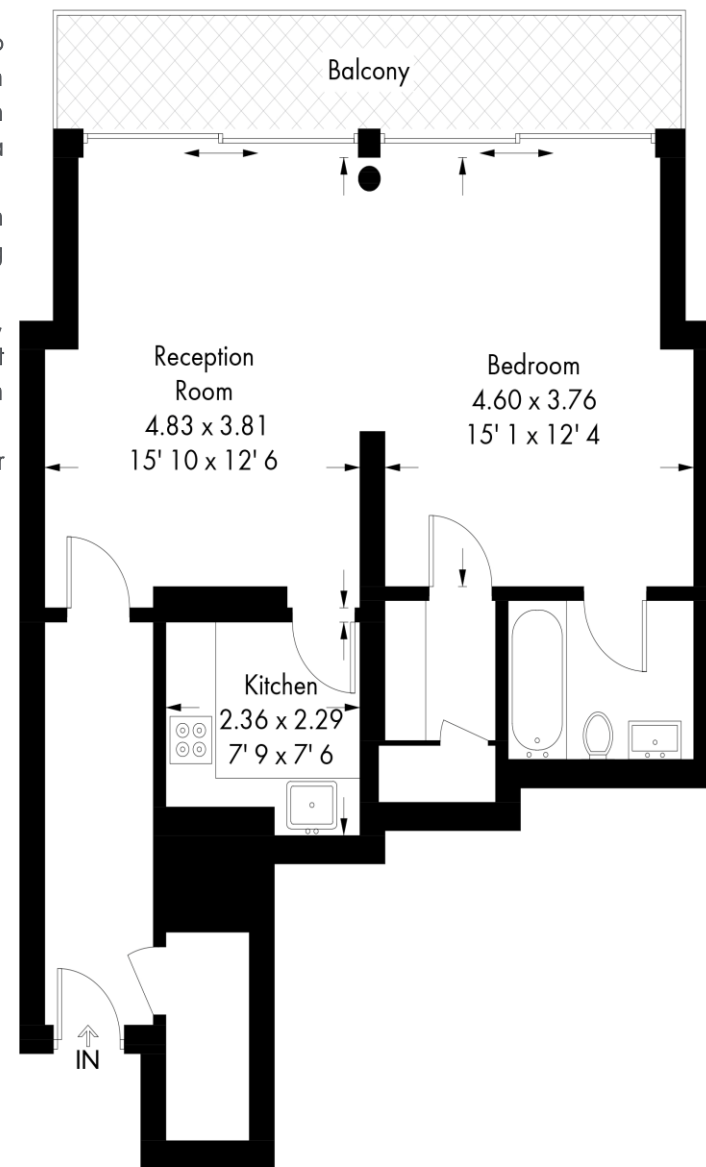
www.jowebster.com

Important Notice

These sales particulars are believed to be correct, but their accuracy is not guaranteed, nor do they form any part of a contract. We have not carried out a detailed survey nor tested services, appliances or fittings. Purchasers must satisfy themselves by inspection or otherwise.

Montevetro

Approximate Gross Internal Area = 653 sq ft / 60.7 sq m



Second Floor

Not to scale, for guidance only and must not be relied upon as a statement of fact. All measurements and areas are approximate only and have been prepared in accordance with the current edition of the RICS Code of Measuring Practice.