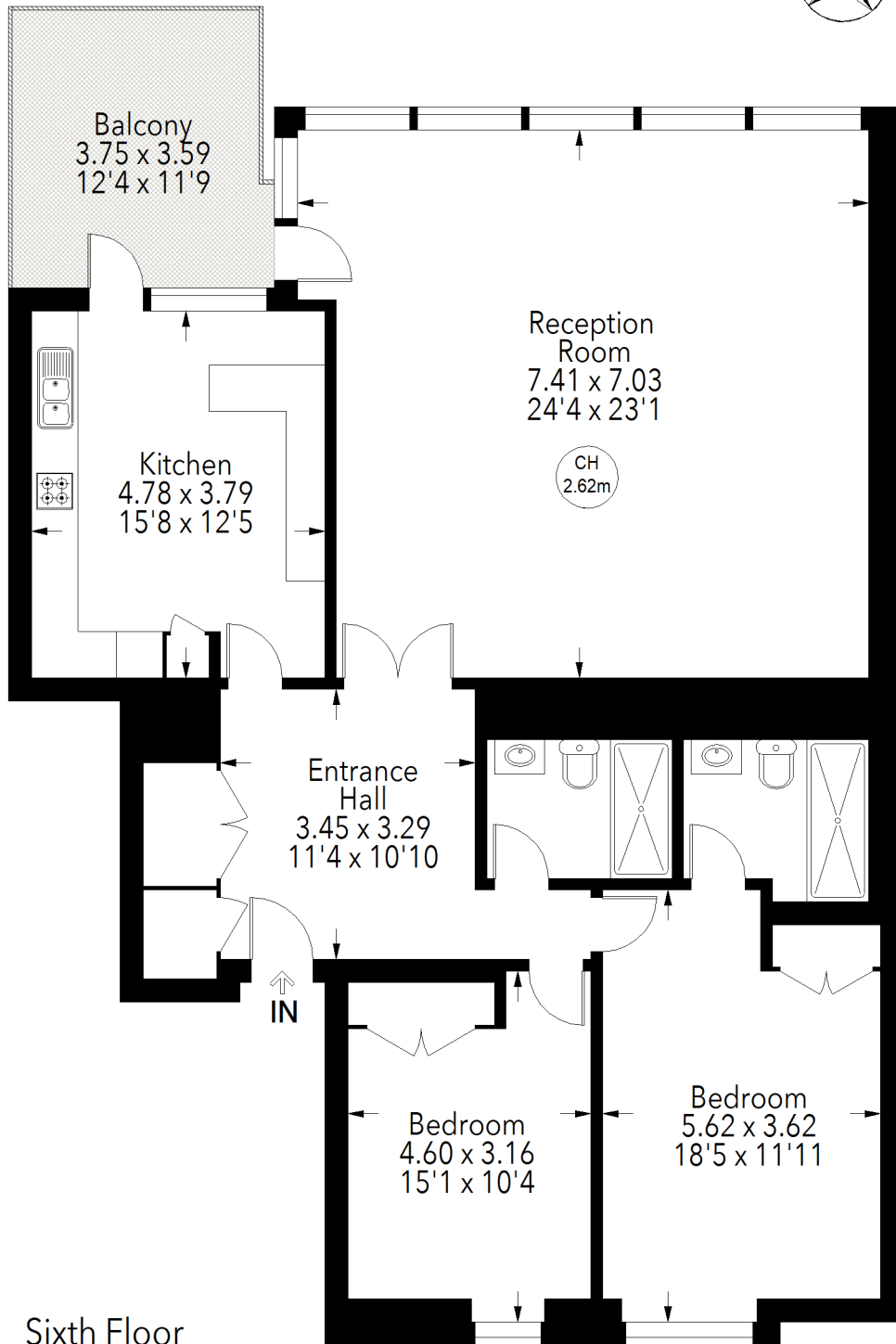


# MONTEVETRO BUILDING, BATTERSEA CHURCH ROAD, SW11

Approximate gross internal area = 1453 sq ft / 134.98 sq m

Key :  
CH - Ceiling Height



Sixth Floor

Not to scale, for guidance only and must not be relied upon as a statement of fact.  
All measurements and areas are approximate only