

Regent Court, Royal Gate,
Kensington, W8

JOWEBSTER





511 Regents Court, Royal Gate, Kensington, W8

A refurbished fifth floor two bedroom apartment with fabulous west facing views across the rooftops of west London. The apartment comprises 1,048 sqft (97.36 sq m) and benefits from a west facing balcony off the reception room. There are two good sized bedrooms, two bathrooms and a spacious kitchen. Regent Court benefits from 24 hour security and portage, a residents gym, landscaped gardens, and one secure underground car parking space.

Excellently located just to the south of High Street Kensington, convenient for the well renowned shops, restaurants and transport links together with the open spaces of Kensington Gardens and Holland Park.

Property Attributes

- Two Bedrooms
- Two Bathrooms
- Reception Room
- Kitchen
- Balcony
- 24-Hour Security and Portage
- Residents Gym
- Underground Parking

Terms

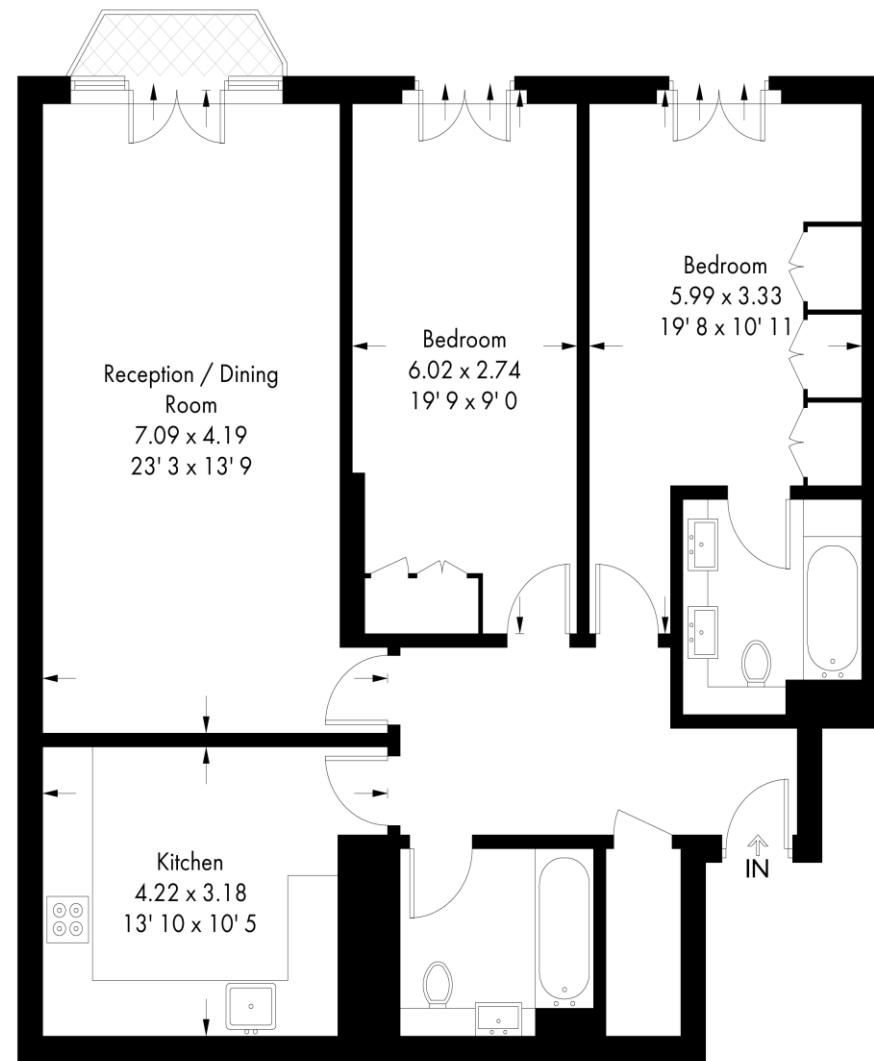
- £1,650,000
- Share of Freehold (999 years from 1 January 1998)
- Royal Borough of Kensington & Chelsea
- Service Charge £6,714.52 (approx 2022)
- Council Tax Band H

+44 (0)20 7349 7055
sales@jowebster.com
www.jowebster.com

Important Notice
 These sales particulars are believed to be correct, but their accuracy is not guaranteed, nor do they form any part of a contract. We have not carried out a detailed survey nor tested services, appliances or fittings. Purchasers must satisfy themselves by inspection or otherwise.

Regents Court

Approximate Gross Internal Area = 1048 sq ft / 97.4 sq m



Fifth Floor

Not to scale, for guidance only and must not be relied upon as a statement of fact
 All measurements and areas are approximate only and have been prepared in accordance with the current edition of the RICS Code of Measuring Practice