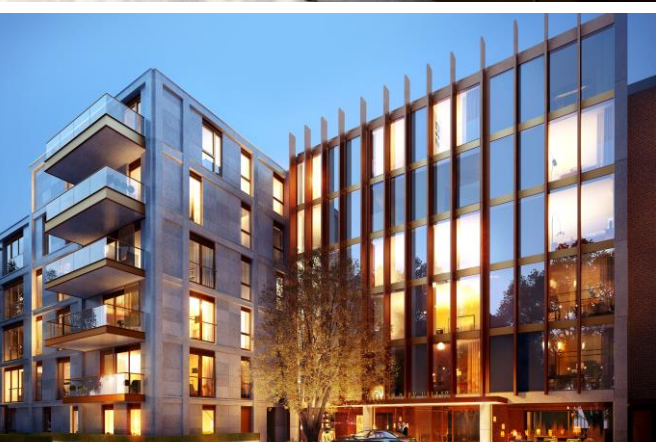


JOWEBSTER



Holland Park Villas
Kensington, W8



Holland Park Villas

London, W8

Holland Park Villas, Kensington W8 is a discreet, gated development immediately adjacent to Holland Park, accessible via Campden Hill. This exclusive development comprises 68 elegant apartments and 4 exceptional penthouses, each with secure underground parking and storage facilities, all set within an acre of landscaped gardens incorporating a woodland walk and secluded courtyard garden.

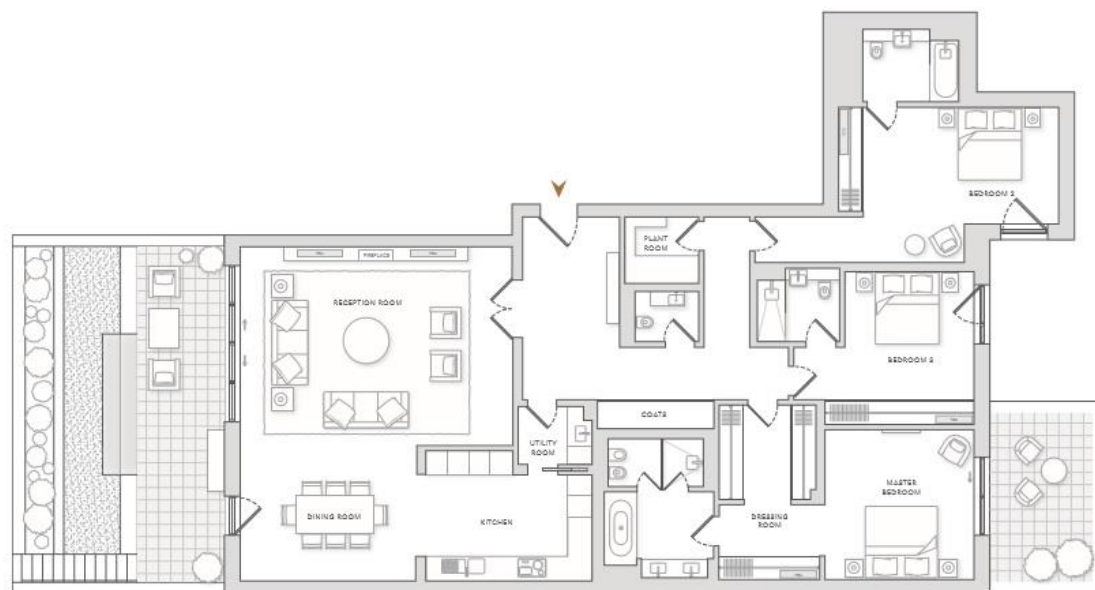
Holland Park Villas offers residents a five-star hotel style concierge service with 24-hour security and amenities including a club room, cinema, business suite, library and catering kitchen. There is also a private residents' 20 metre swimming pool, fully equipped gym and luxury spa with treatment rooms all exclusively managed by Bodyism.

ACCOMMODATION

- 3 Bedrooms
- 1 Reception
- 2,547 sq. ft
- 2 x Terraces
- Discreet Gated Development
- Five-Star Hotel Style Concierge
- 24 Hour Security
- Secure Underground Parking Storage
- Landscaped Gardens
- Cinema
- 20 Metre Swimming Pool
- Gymnasium
- Luxury Spa
- Business Suites
- Club Room

TERMS

- £7,250,000
- Leasehold
- Royal Borough of Kensington Chelsea
- Service Charge TBC
- Ground Rent TBC



0207 349 7055

sales@jowebster.com

www.jowebster.com

Important Notice
These sales particulars are believed to be correct, but their accuracy is not guaranteed, nor do they form any part of a contract. We have not carried out a detailed survey nor tested services, appliances or fittings.
Purchasers must satisfy themselves by inspection or otherwise.

JOWEBSTER