

JOWEBSTER

Walnut Court, Kensington Green, W8





Walnut Court, Kensington Green, W8

A wonderful sixth floor apartment located in the popular development of Kensington Green. The apartment benefits from being south and west facing, benefitting from patio doors on to a balcony and fabulous views.

Consisting of a bright and spacious reception room, separate kitchen, three well-proportioned bedrooms, the master with en-suite shower room and a family bathroom. The apartment is being sold with one underground parking space.

Walnut Court is located within Kensington Green, with its award winning landscaped gardens, 24 hour security and concierge services, a residents only gymnasium with sauna and steam rooms, as well as secure underground car parking. Kensington Green is a moments' walk from the amenities and transport links of High Street Kensington.



Property Attributes

- West facing Reception Room with doors to balcony
- Well appointed Bulthaup Kitchen
- 3 Bedrooms
- 2 Bathrooms
- Landscaped Gardens
- Resident-Only Gym with Sauna & Steam Room
- Underground Parking
- Wooden Flooring to Reception Room and Hallway
- 24/7 Security

Terms

- £2,000,000
- Royal Borough of Kensington And Chelsea
- Share of Freehold (999 Years from Sept '91)
- Estimated Service Charge £9,958.77 (2025)
- Estimated Ground Rent £200





Walnut Court,
St. Marys Gate, W8
Approximate Gross Internal Area
106.74 sq m / 1,149 sq ft
(CH = Ceiling Heights)

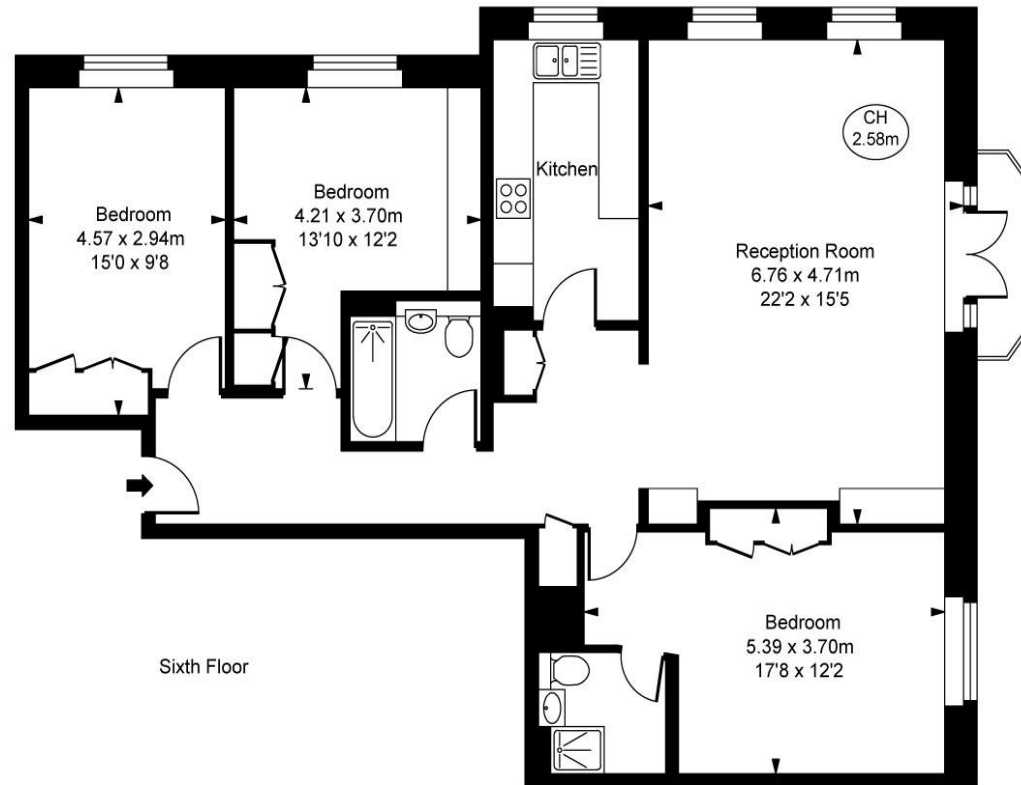


ILLUSTRATION FOR IDENTIFICATION PURPOSES ONLY
ALL MEASUREMENTS ARE MAXIMUM, AND INCLUDE WINDOW BAYS AND WARDROBES WHERE APPLICABLE
THIS PLAN MUST NOT BE REPRODUCED BY ANY OTHER PERSON WITHOUT PERMISSION

+44 (0)20 7349 7055
sales@jowebster.com
www.jowebster.com

Important Notice
These sales particulars are believed to be correct, but their accuracy is not guaranteed, nor do they form any part of a contract. We have not carried out a detailed survey nor tested services, appliances or fittings.
Purchasers must satisfy themselves by inspection or otherwise.