

Regent Court, Royal Gate Kensington, W8

JOWEBSTER





Regent Court, Royal Gate Kensington, W8

A wonderful two bedroom apartment on the fourth floor of the prestigious Royal Gate development in central Kensington. The apartment has been newly renovated and comprises of a modern kitchen, spacious reception room, two bedrooms with ample storage space and a private Juliette balcony, and two brand new bathroom suites (one en-suite). The property has been finished to a high standard throughout with wooden flooring and is available furnished.

The Royal Gate development benefits from 24 hour concierge & security, lift access, communal gym and is excellently located just to the south of High Street Kensington, convenient for the well renowned shops, restaurants and transport links together with the open spaces of Kensington Gardens and Holland Park.

Property Attributes

- Two Bedrooms
- Two Bathrooms
- Reception Room
- Kitchen
- 24/7 Security & Concierge
- Gym Access
- Lift Access

Terms

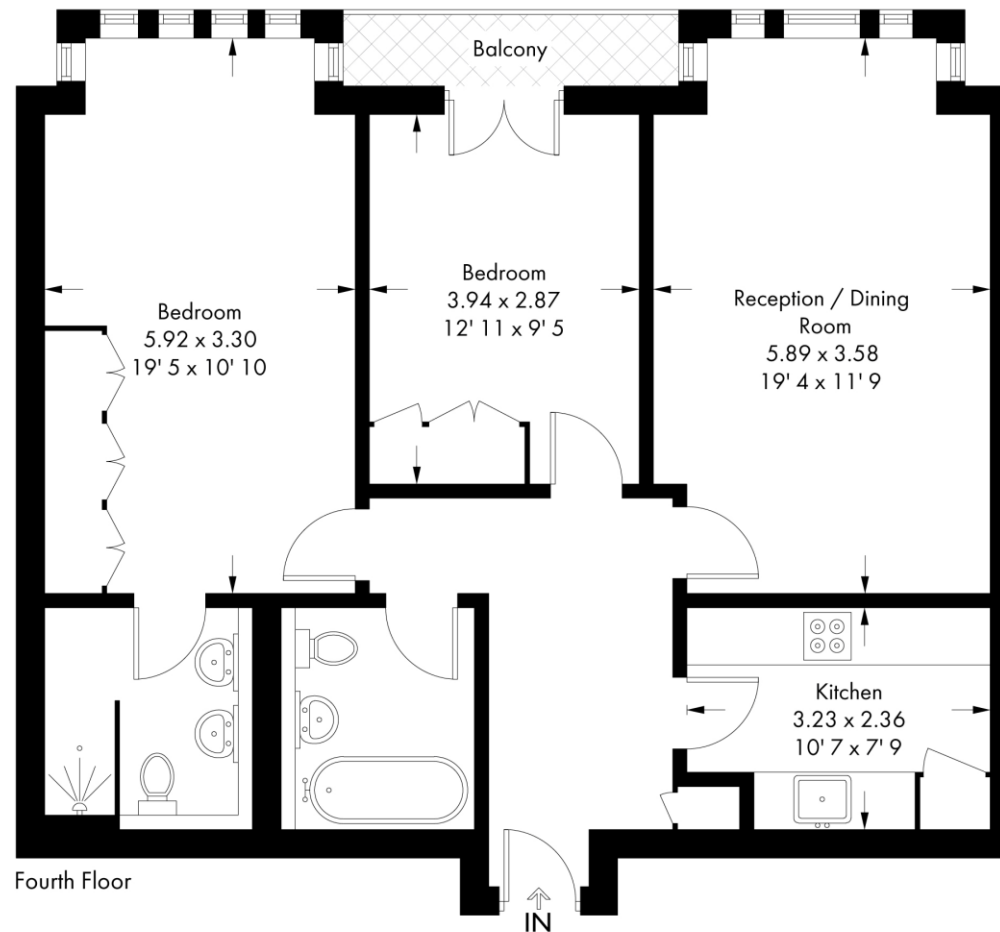
- £1.060 per week
- Royal Borough of Kensington And Chelsea
- Furnished





Regents Court

Approximate Gross Internal Area = 878 sq ft / 81.6 sq m



Not to scale, for guidance only and must not be relied upon as a statement of fact
All measurements and areas are approximate only and have been prepared in
accordance with the current edition of the RICS Code of Measuring Practice

+44 (0)20 7349 7055
sales@jowebster.com
www.jowebster.com

Important Notice

These sales particulars are believed to be correct, but their accuracy is not guaranteed, nor do they form any part of a contract. We have not carried out a detailed survey nor tested services, appliances or fittings.
Purchasers must satisfy themselves by inspection or otherwise.