



JOWEBSTER

Apartment C15
The Montevetro Building, SW11



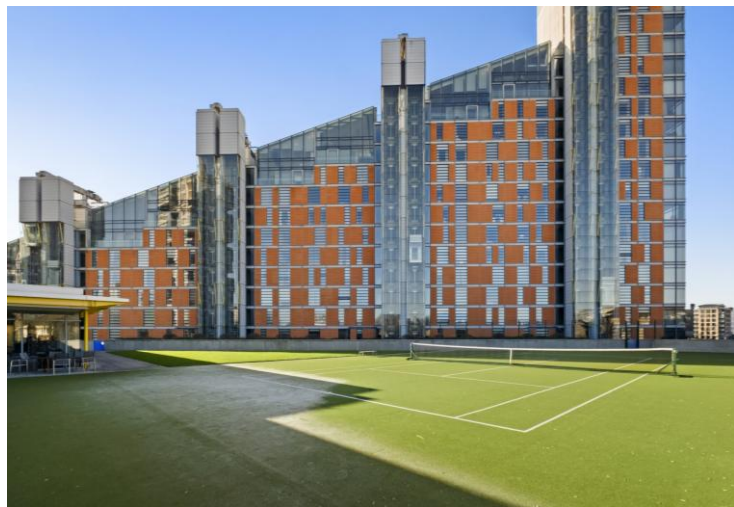
Property Attributes

- Open Plan Reception/Kitchen/Dining Room
- Master Bedroom with En Suite Bathroom
- Two Further Bedrooms
- Shower Room
- Utility Room
- One Underground Car Parking Space
- 24 Hour Security and Concierge
- Landscaped Gardens
- Gymnasium (Residents Only)
- Tennis Court (All Weather)



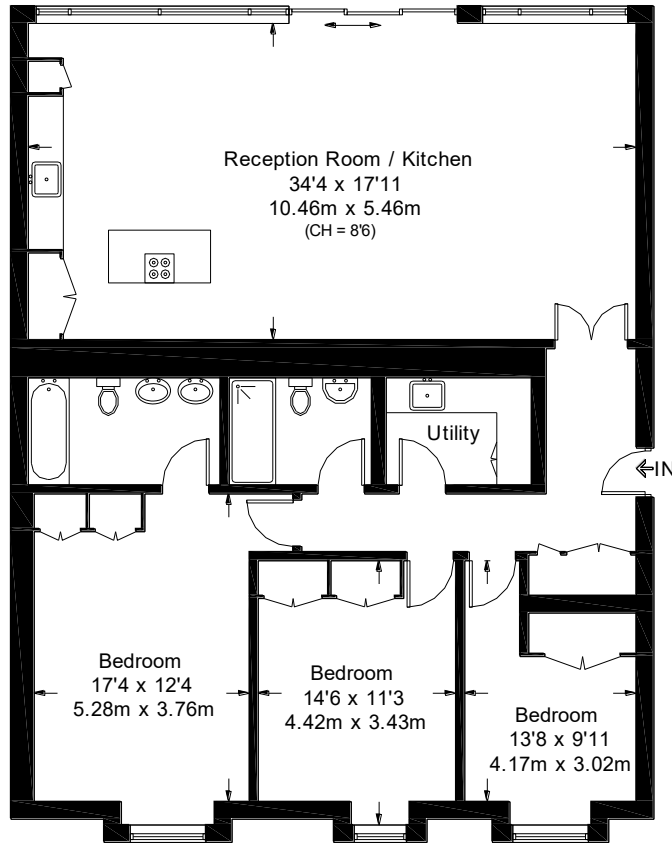
Terms

- Price: £2,100,000
- Borough: London Borough of Wandsworth
- Tenure: Share of Freehold
- Service Charge: £13,229
- Ground Rent: peppercorn
- Council Tax Band: Band H



Montevetro

Approximate Gross Internal Area = 1570 sq ft / 145.8 sq m



First Floor

Not to scale, for guidance only and must not be relied upon as a statement of fact.
All measurements and areas are approximate only and have been prepared in
accordance with the current edition of the RICS Code of Measuring Practice.

+44 (0) 20 7349 7055
sales@jowebster.com

Misdescription Act

We wish to advise prospective purchasers that these sales particulars are believed to be correct, but their accuracy is in no way guaranteed, nor do they form any part of contract. We have not carried out a detailed survey nor tested the services, appliances or specific fittings. Measurements are approximate.