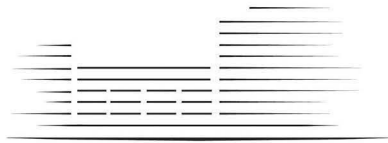


LIGHTERMAN TOWERS



CHELSEA ISLAND

2 BEDROOM APARTMENT

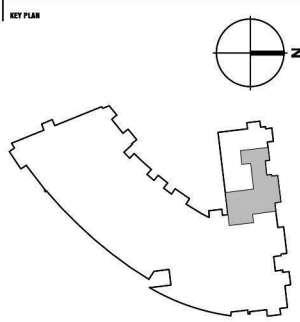
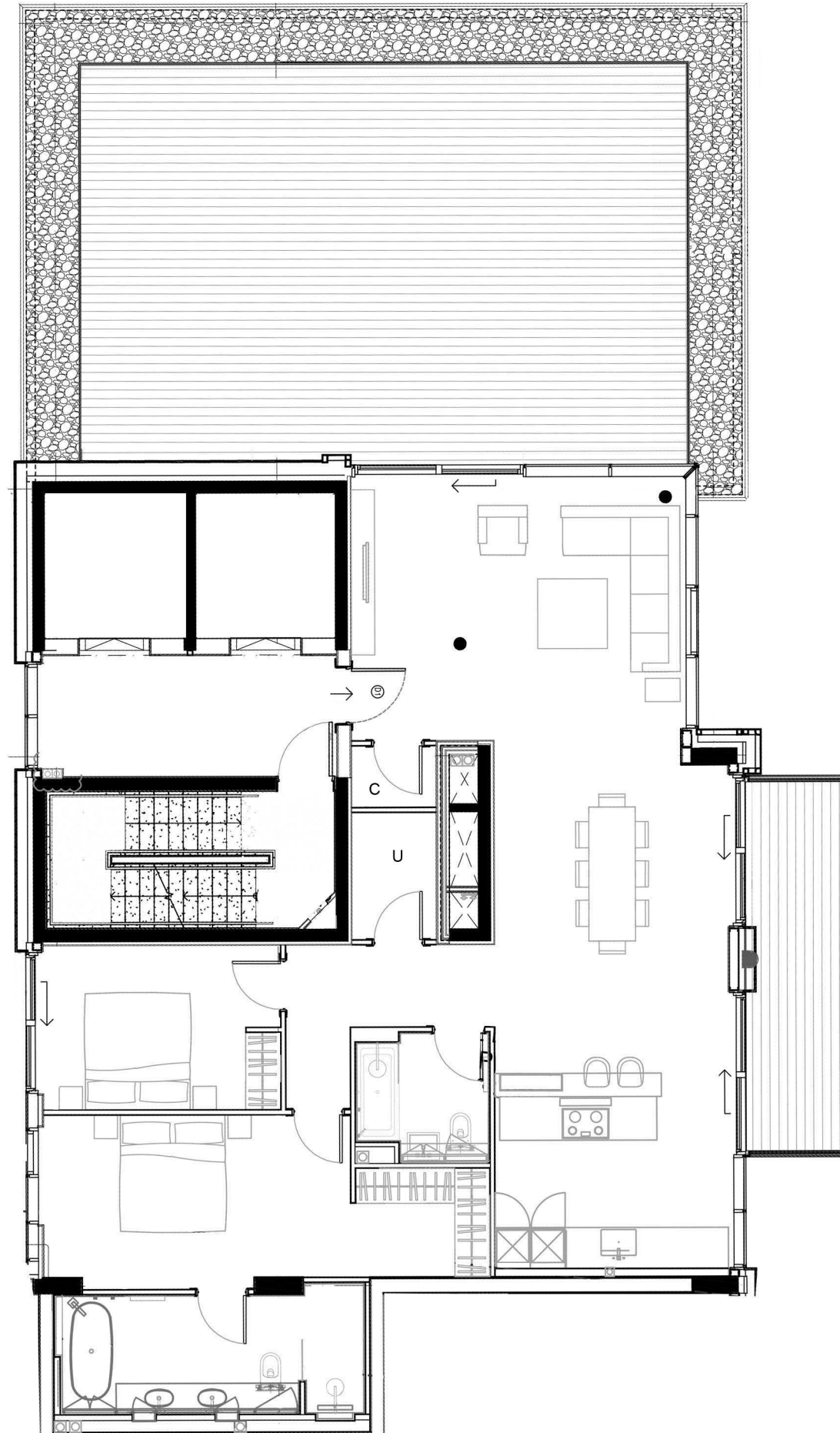
A.61 Level 6 (88)

Total Gross Internal Area = 1414 sq.ft. / 131 m²

Bedroom 1 = 14'-2" x 9'-8" / 4.3 x 2.9m

Bedroom 2 = 14'-5" x 9'-2" / 4.4 x 2.8m

Living/Kitchen = 44'-10" x 17'-1" / 13.7 x 5.2m



- KEY:
- C Cupboard
 - U Utility Cupboard
 - W Fitted Wardrobe
 - WIW Walk in Wardrobe

THESE DRAWINGS ARE FOR MARKETING PURPOSES ONLY.
FINAL LOCATION AND SET-OUTS TO BE CONFIRMED
DURING CONSTRUCTION PHASE.

FOR INFORMATION ONLY
NOT FOR CONSTRUCTION

Notes:
Measurements are the maximum room dimensions .
Floor layouts are subject to change at any time.
These drawings are for marketing purposes only