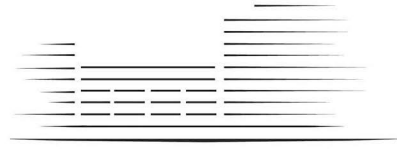


# LIGHTERMAN TOWERS



# CHELSEA ISLAND

## 3 BEDROOM APARTMENT

B.45 Level 4 (57)  
B.55 Level 5 (63)  
B.64 Level 6 (68)

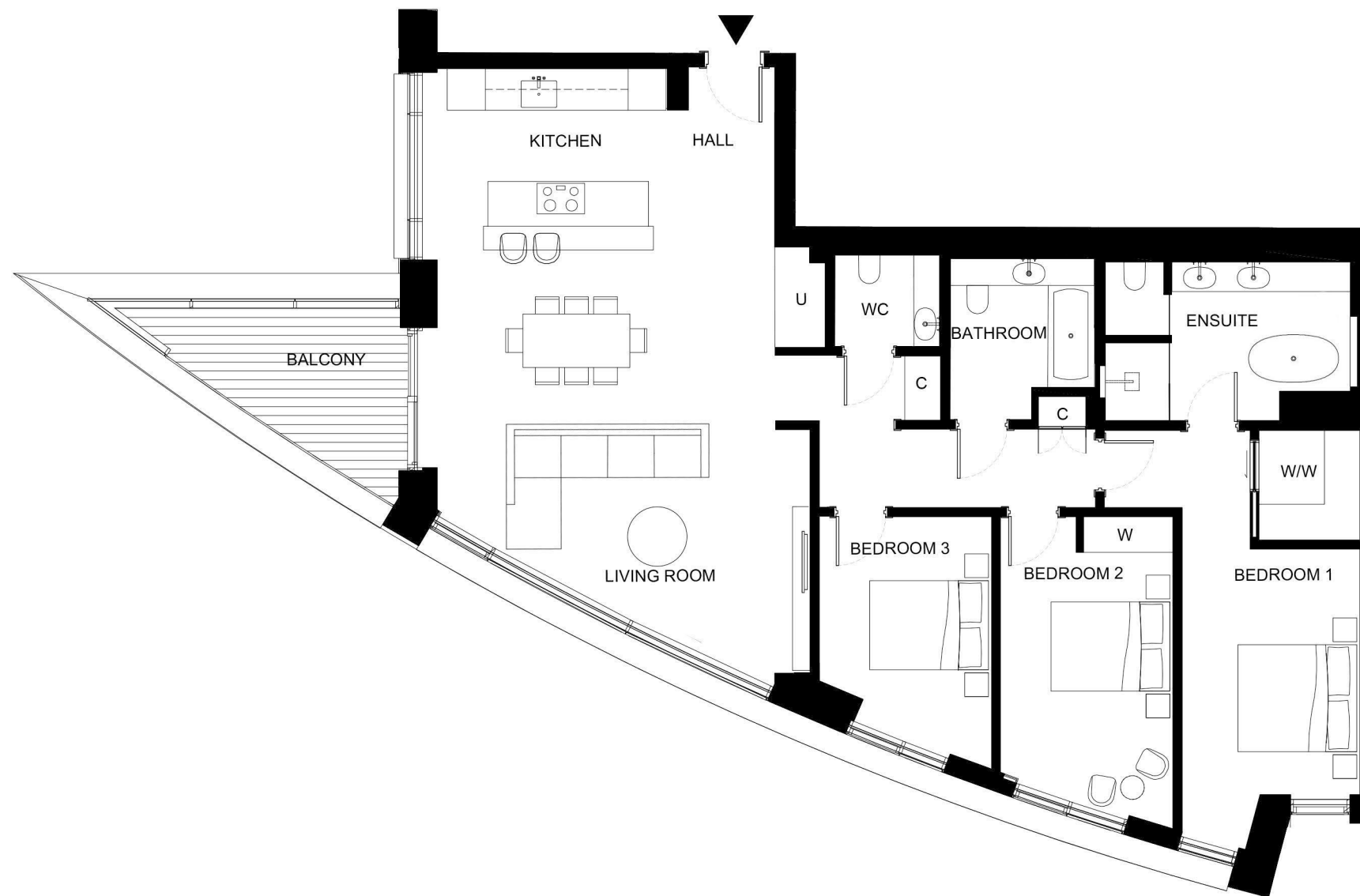
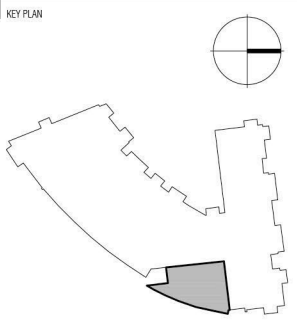
Total Gross Internal Area = 1521 sq.ft. / 141 m<sup>2</sup>

Bedroom 1 = 16'-9" x 9'-10" / 5.1 x 3.0m

Bedroom 2 = 17'-3" x 9'-6" / 5.2 x 2.9m

Bedroom 3 = 13'-11" x 11'-6" / 4.2 x 3.5m

Living/Kitchen = 34'-3" x 19'-9" / 10.4 x 6.0m



KEY:  
C Cupboard  
U Utility Cupboard  
W Fitted Wardrobe  
W/W Walk in Wardrobe

THESE DRAWINGS ARE FOR MARKETING PURPOSES ONLY.  
FINAL LOCATION AND SET-OUTS TO BE CONFIRMED  
DURING CONSTRUCTION PHASE.

FOR INFORMATION ONLY  
NOT FOR CONSTRUCTION

Notes:  
Measurements are the maximum room dimensions .  
Floor layouts are subject to change at any time.  
These drawings are for marketing purposes only