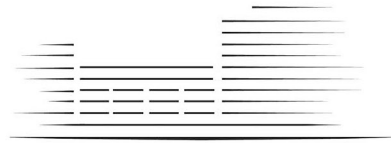


LIGHTERMAN TOWERS



CHELSEA ISLAND

2 BEDROOM APARTMENT

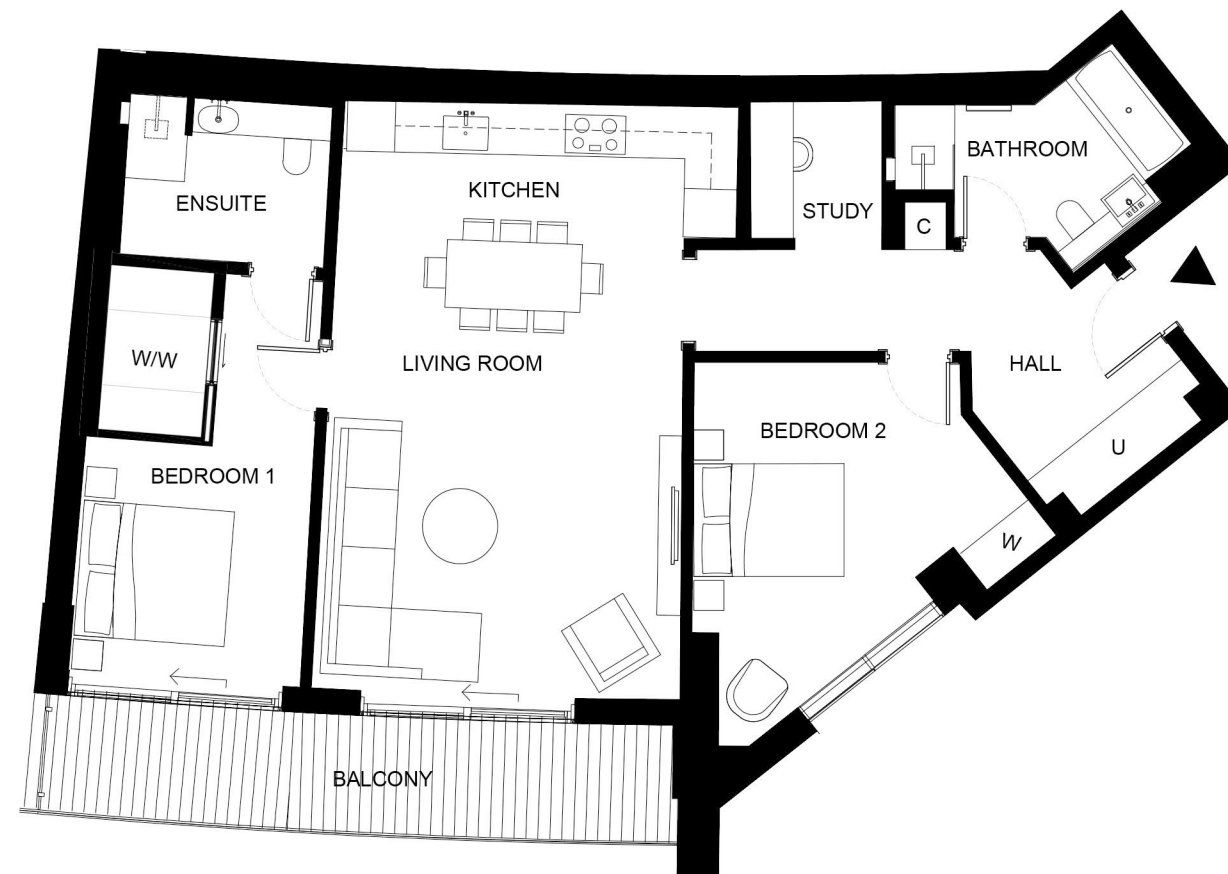
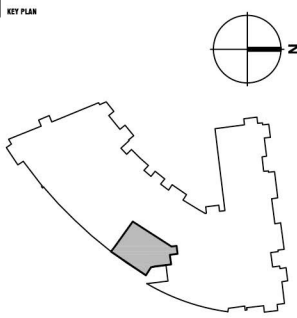
B.56 Level 5 (64)

Total Gross Internal Area = 1154 sq.ft. / 107 m²

Bedroom 1 = 18'-4" x 10'-1" / 5.6 x 3.1m

Bedroom 2 = 16'-10" x 14'-8" / 5.1 x 4.5m

Living/Kitchen = 26'-6" x 16'-1" / 8.1 x 4.9m



KEY:

- C Cupboard
- U Utility Cupboard
- W Fitted Wardrobe
- W/W Walk in Wardrobe

THESE DRAWINGS ARE FOR MARKETING PURPOSES ONLY.
FINAL LOCATION AND SET-OUTS TO BE CONFIRMED
DURING CONSTRUCTION PHASE.

MARKETING PLAN ONLY
NOT FOR CONSTRUCTION

Notes:

Measurements are the maximum room dimensions .
Floor layouts are subject to change at any time.
These drawings are for marketing purposes only