



Lighterman Towers, Chelsea Island, SW10

JOWEBSTER



Lighterman Towers, Chelsea Island, SW10

A well presented two bedroom 5th floor apartment within the boutique development of Chelsea Island. The property comprises 1,154 sq ft (107.21 sq m) and benefits from a large balcony.

The apartment comprises of a spacious open plan kitchen and reception room, two bedrooms one with en-suite bathroom, separate additional bathroom and study area. The master bedroom further benefits from a dressing room. Car parking available upon separate negotiation.

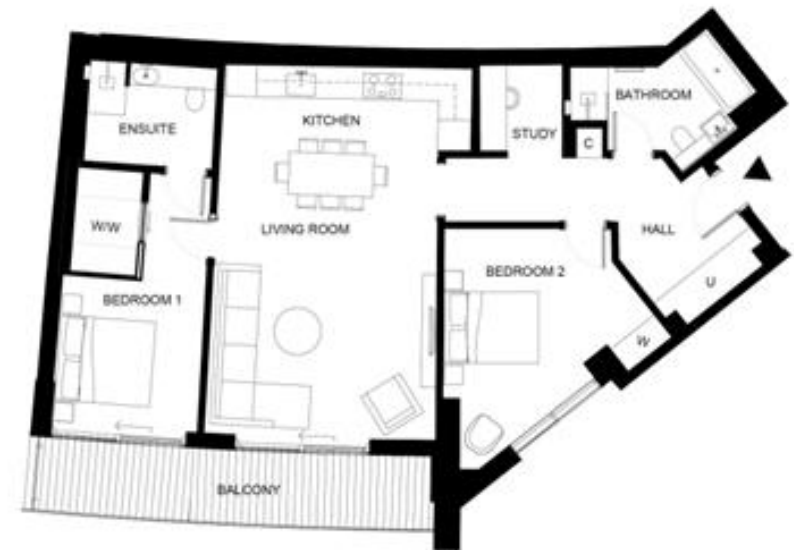
Chelsea Island is located adjacent to The Chelsea Design Centre and residents benefit from concierge service, a roof top garden and gym access. The development is a short walk from the River Thames and close to Imperial Wharf Station providing access to the over ground and underground links.

Property Attributes

- 2 Bedrooms
- 2 Bathrooms (One En Suite)
- Reception Room
- Kitchen/ Dining Area
- Study Area
- Separate Bathroom
- Balcony
- 24 Hour Concierge
- Landscaped Gardens
- Gym

Terms

- £1,995,000
- Leasehold
- Royal Borough of Kensington & Chelsea
- Council Tax Band H



+44 (0)20 7349 7055
sales@jowebster.com
www.jowebster.com

Important Notice

These sales particulars are believed to be correct, but their accuracy is not guaranteed, nor do they form any part of a contract. We have not carried out a detailed survey nor tested services, appliances or fittings. Purchasers must satisfy themselves by inspection or otherwise.