



Walnut Court, Kensington Green, W8

JOWEBSTER



Walnut Court, Kensington Green, W8

A bright three bedroom apartment located on the 4th floor within Walnut Court which provides 1,185 sq.ft of living space. The apartment is south-west facing and benefits from a double aspect reception room and dining area, overlooking Devonshire Place and St. Mary's Gate.

The property provides three double bedrooms with Juliette balconies (including an en-suite master bedroom). The property is being sold with one underground car parking space.

Walnut Court is located within Kensington Green, with its award winning landscaped gardens, 24 hour security and concierge services, a residents only gymnasium with sauna and steam rooms, as well as secure underground car parking. Kensington Green is a moments` walk from the amenities and transport links of High Street Kensington.

Property Attributes

- Three Bedrooms
- Two Bathrooms (One En-Suite)
- Double Aspect Reception/Dining Room
- Kitchen
- Juliette Balconies
- Underground Car Parking Space
- 24 Hour Security & Concierge
- Gym (Residents Only)
- Landscaped Gardens

Terms

- £2,275,000
- Share of Freehold (999 Years from Sept.'91)
- Royal Borough of Kensington & Chelsea
- Estimated Service Charge £10,373.87 per annum (2024)
- Estimated Ground Rent £202 per annum (2024)
- Council Tax Band H

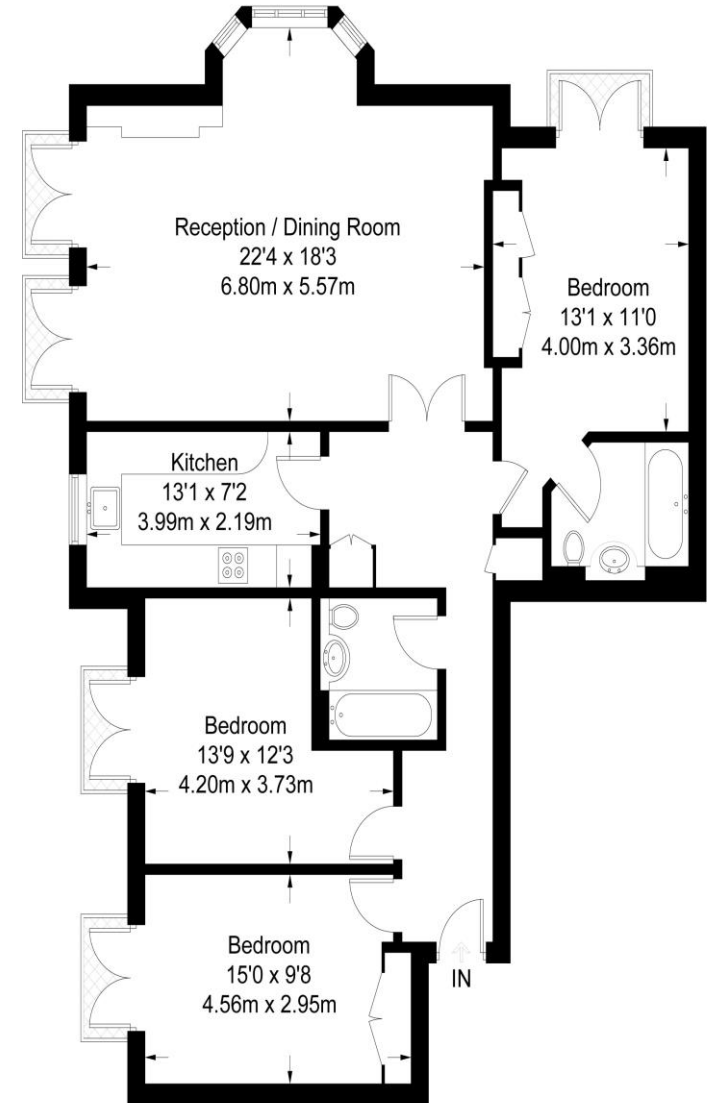
+44 (0)20 7349 7055
sales@jowebster.com
www.jowebster.com

Important Notice

These sales particulars are believed to be correct, but their accuracy is not guaranteed, nor do they form any part of a contract. We have not carried out a detailed survey nor tested services, appliances or fittings. Purchasers must satisfy themselves by inspection or otherwise.

Walnut Court

Approximate Gross Internal Area = 1185 sq ft / 110.1 sq m



Fourth Floor

Not to scale, for guidance only and must not be relied upon as a statement of fact. All measurements and areas are approximate only and have been prepared in accordance with the current edition of the RICS Code of Measuring Practice.