

# JOWEBSTER

The Montevetro Building, Battersea, SW11







## The Montevetro Building, Battersea, SW11

Located in the prestigious Montevetro Building, this beautifully presented ground floor apartment offers 1,573 sq ft of bright and contemporary living space on the banks of the River Thames.

The impressive open-plan kitchen and reception room spans over 34 feet, with floor-to-ceiling windows that flood the space with natural light. The sleek, modern kitchen is fully integrated and ideal for entertaining. There are two spacious double bedrooms, both with built-in wardrobes, including a luxurious principal suite with a stylish en suite bathroom. A further guest bathroom, separate utility room, and generous entrance hall provide excellent functionality.

Residents benefit from 24-hour concierge, secure underground parking, a gym, tennis courts, and landscaped communal areas. Moments from Battersea Park and Battersea Square, this is riverside living at its finest.



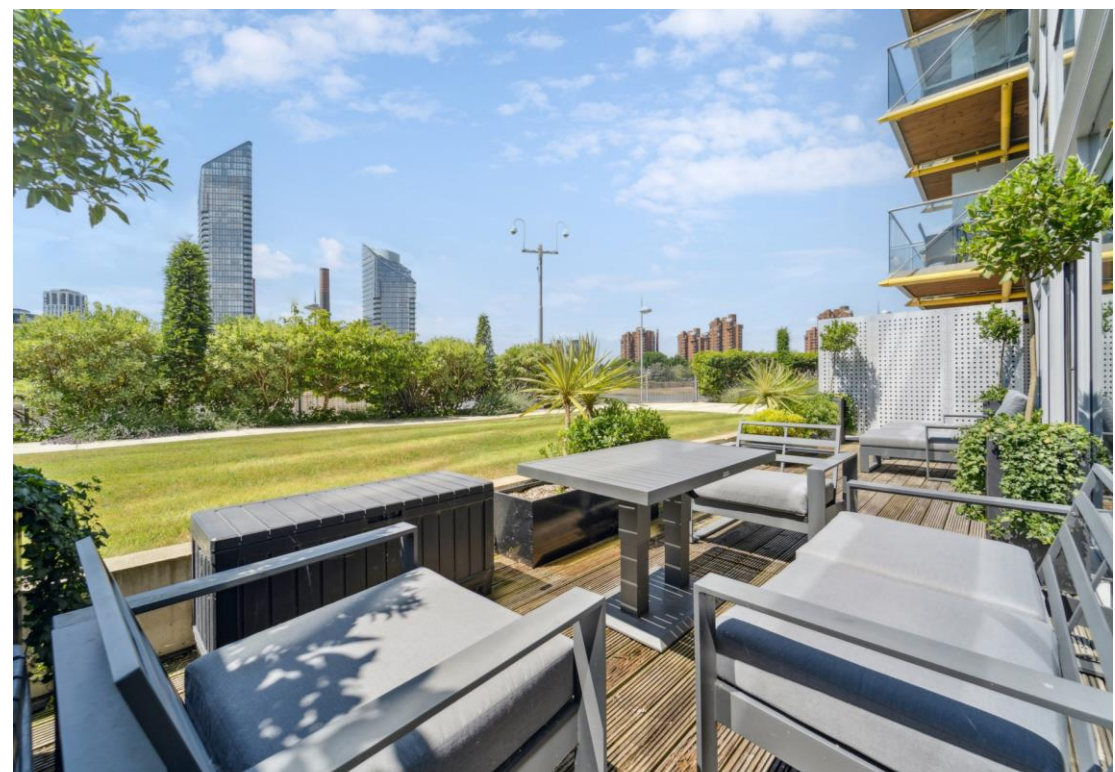
### Property Attributes

- Kitchen/Reception Room
- Two Bedrooms (One En Suite Bathroom)
- Family Bathroom
- Outdoor Space
- Utility Room
- 24 Hour Concierge/Security
- Gym
- Tennis Court
- Car Parking

### Terms

- £1,385 per week
- London Borough of Wandsworth
- Furnished
- Car Parking

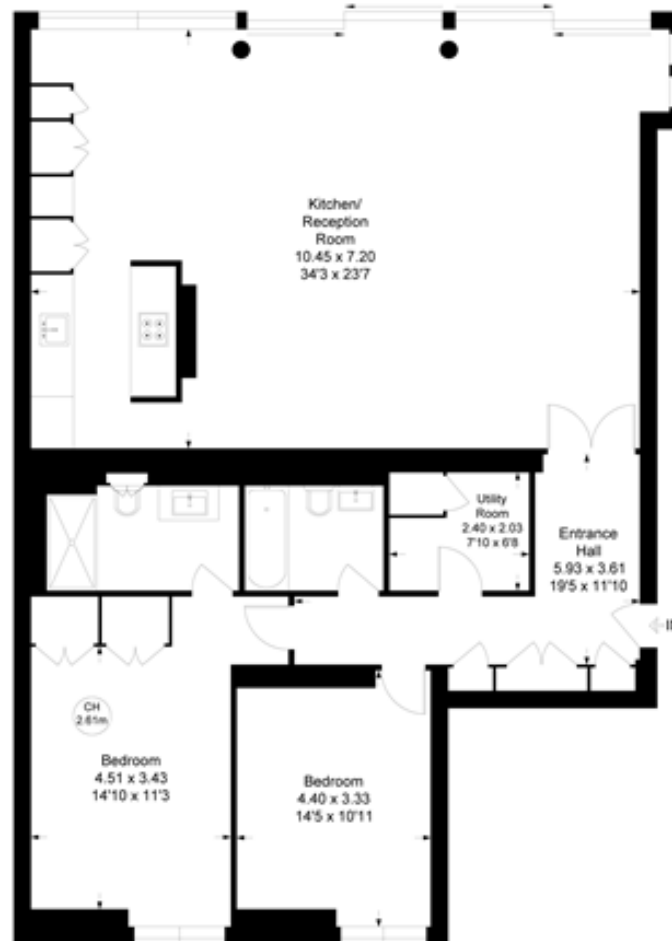




# THE MONTEVETRO BUILDING, SW11

Approximate gross internal area = 1573 sq ft / 146.18 sq m

Key:  
CH - Ceiling Height



## Ground Floor

Not to scale, for guidance only and must not be relied upon as a statement of fact.  
All measurements and areas are approximate only

+44 (0)20 7349 7055  
sales@jowebster.com  
www.jowebster.com

### Important Notice

These sales particulars are believed to be correct, but their accuracy is not guaranteed, nor do they form any part of a contract. We have not carried out a detailed survey nor tested services, appliances or fittings.  
Purchasers must satisfy themselves by inspection or otherwise.