

Riverside One, SW11

JOWEBSTER





Riverside One, SW11

This stunning two-bedroom lateral apartment is situated in the iconic Riverside One Building, designed by Norman Foster. Nestled on the Thames between Albert and Battersea Bridges, it offers breathtaking river views, especially at night toward Albert Bridge.

Spanning 1,500 sq. ft (139.32 sq. m), the apartment features a spacious reception room with floor-to-ceiling sliding windows, providing a bright living area. The apartment also includes a separate modern kitchen with a breakfast bar and a large hallway. The master bedroom benefits from river views and an en-suite bathroom, while the second double bedroom also has its own en-suite. The second bedroom can also be used as a study.

Riverside One is just moments from Battersea Park and the vibrant amenities at Battersea Power Station, this apartment is a short stroll across to King's Road and Chelsea. Riverside One is a unique building with limited apartments set discreetly behind secure gates in a quiet location offering the up most in privacy together with 24-hour security, portage and underground car parking.



Property Attributes

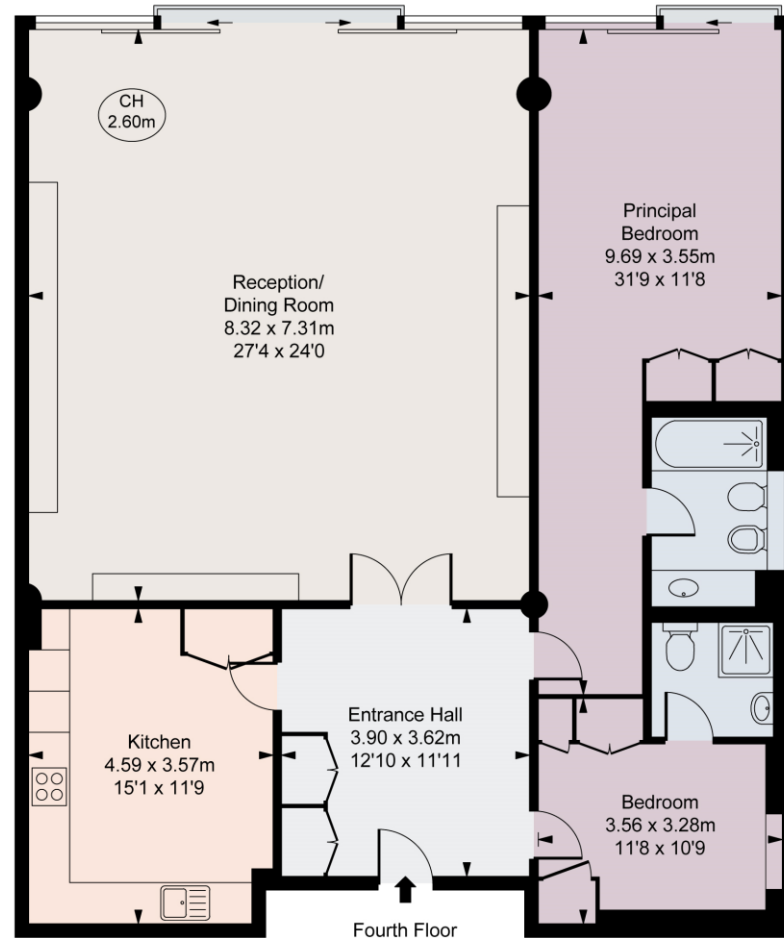
- Reception Room
- Kitchen
- 2 Bedrooms (2 with ensuites)
- Cloakroom
- Lift Access
- Riverside Views
- 24 Hour Security and Portage
- 1 Underground Car Parking Space

Terms

- £1,900,000
- Leasehold
(89 years remaining, currently working on its extension)
- London Borough of Wandsworth
- Share of Freehold
- Council Tax Band H
- Estimated Service Charge £9.33 per sq. ft
(Approx. 2025, excluding sinking fund)



Riverside One,
Hester Road, SW11
Approximate Gross Internal Area
139.32 sq m / 1,500 sq ft
(CH = Ceiling Heights)



This plan is not to scale. It is for guidance and not for valuation purposes.
All measurements and areas are approximate only, and have been prepared in accordance with the current edition of the RICS Code of Measuring Practice.
© Fulham Performance

+44 (0)20 7349 7055
sales@jowebster.com
www.jowebster.com

Important Notice
These sales particulars are believed to be correct, but their accuracy is not guaranteed, nor do they form any part of a contract. We have not carried out a detailed survey nor tested services, appliances or fittings.
Purchasers must satisfy themselves by inspection or otherwise.