



**JOWEBSTER**

*Albion Riverside, SW11*



### Property Attributes

- Open Plan Reception Room
- Kitchen
- Three Bedrooms
- Two En-suite Bathrooms
- Car Parking
- Walk-In Wardrobes
- Swimming Pool
- 24 Hour Security
- Gym
- Podium Garden



### Terms

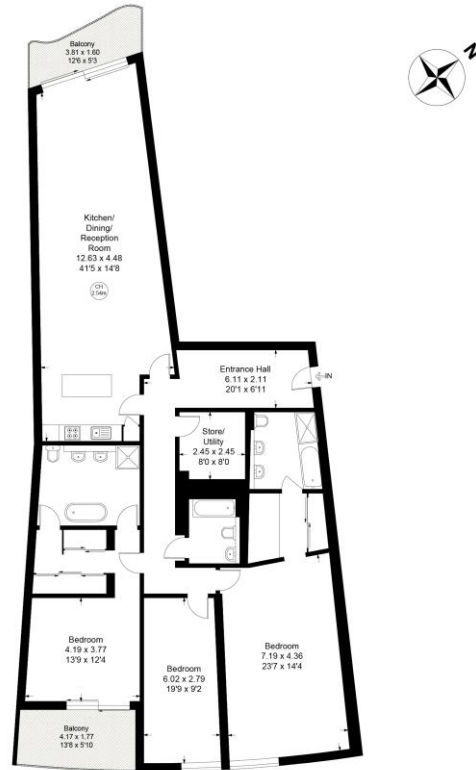
- £8,200 per month
- Borough: London Borough of Wandsworth
- Unfurnished
- Available January 2026
- Council Tax Band: Band H
- 6 weeks security deposit required



# ALBION RIVERSIDE, HESTER ROAD, SW11

Approximate gross internal area = 2078 sq ft / 193.06 sq m

Key:  
CH - Ceiling Height



Fifth Floor

Not to scale, for guidance only and must not be relied upon as a statement of fact.  
All measurements and areas are approximate only

+44 (0) 20 7349 7055  
[lettings@jowebster.com](mailto:lettings@jowebster.com)

## Misdescription Act

We wish to advise prospective purchasers that these sales particulars are believed to be correct, but their accuracy is in no way guaranteed, nor do they form any part of contract. We have not carried out a detailed survey nor tested the services, appliances or specific fittings. Measurements are approximate.