



JOWEBSTER

Albion Riverside, SW11



Property Attributes

- 4 Bedrooms
- 2 En-Suite Bathrooms
- 1 Jackand Jill Shower Room
- Open Plan Kitchen and Reception Room
- Riverside Balcony
- Secure Underground Parking
- Gym
- Swimming Pool
- 24 Hour Security



Terms

- Available for a long let
- Price: £2,500 per week, £10,834 per calander month
- Borough: London Borough of Wandsworth
- Council Tax Band: Band H
- 6 Week Security Deposit Required
- Available from 30th June 2026
- Furnished or Unfurnished
- EPC rating C



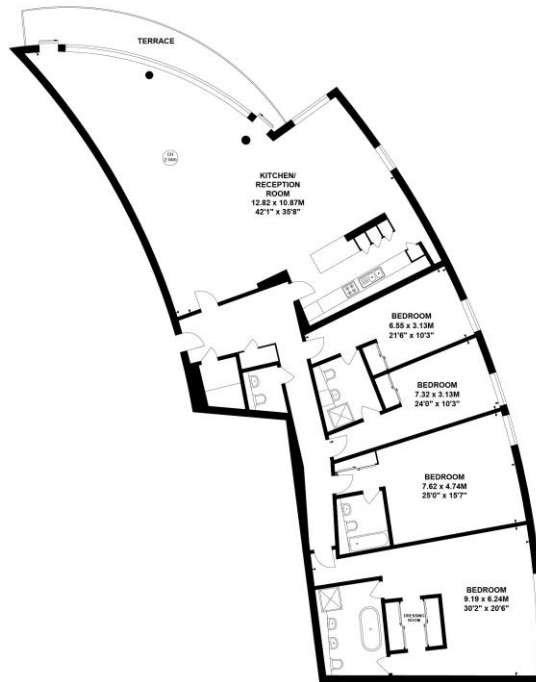
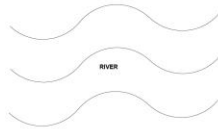
Hester Road, SW11

Approximate gross internal area

268.68 sq m / 2891 sq ft

Key :

CH - Ceiling Height



Fifth Floor

This plan is not to scale and must be used as layout guidance only. All measurements and areas are approximate and should not be relied upon to provide accurate information. This plan must not be relied upon when making property valuations, design considerations or any other such relevant decisions. We accept no responsibility or liability (whether in contract, tort or otherwise) in relation to any loss whatsoever arising from or in connection with any use of this plan or the adequacy, accuracy or completeness of it or any information within it.

+44 (0) 20 7349 7055
lettings@jowebster.com

Misdescription Act

We wish to advise prospective purchasers that these sales particulars are believed to be correct, but their accuracy is in no way guaranteed, nor do they form any part of contract. We have not carried out a detailed survey nor tested the services, appliances or specific fittings. Measurements are approximate.