

Albion Riverside,
Battersea, SW11

JOWEBSTER





Albion Riverside, Battersea, SW11

A bright 2 bedroom apartment which spans from the front to back of Albion Riverside providing direct river views from the reception room and views over to Battersea Park from the bedrooms.

The apartment is situated on the fourth floor, comprising 1,399 sq.ft of living space and is being sold with one underground car parking space.



Albion Riverside is located on the south bank of the river Thames, between Battersea and Albert Bridges. The award winning development was designed by Foster and Partners and benefits from 24 hour security and concierge, underground car parking, swimming pool, gymnasium and podium garden.

Property Attributes

- Reception/Dining Room
- Kitchen
- Balcony
- Master Bedroom with Dressing Area and En Suite Bathroom
- Second Bedroom
- Second Bathroom
- One Underground Car Parking Space
- 24 Hour Security and Concierge
- Swimming Pool
- Gymnasium

Terms

- £1,850,000
- Leasehold (999 Years from Sept. '91)
- London Borough of Wandsworth
- Service Charge £7,000 pa (Approx. 2021)
- Ground Rent £275 pa (Approx. 2021)

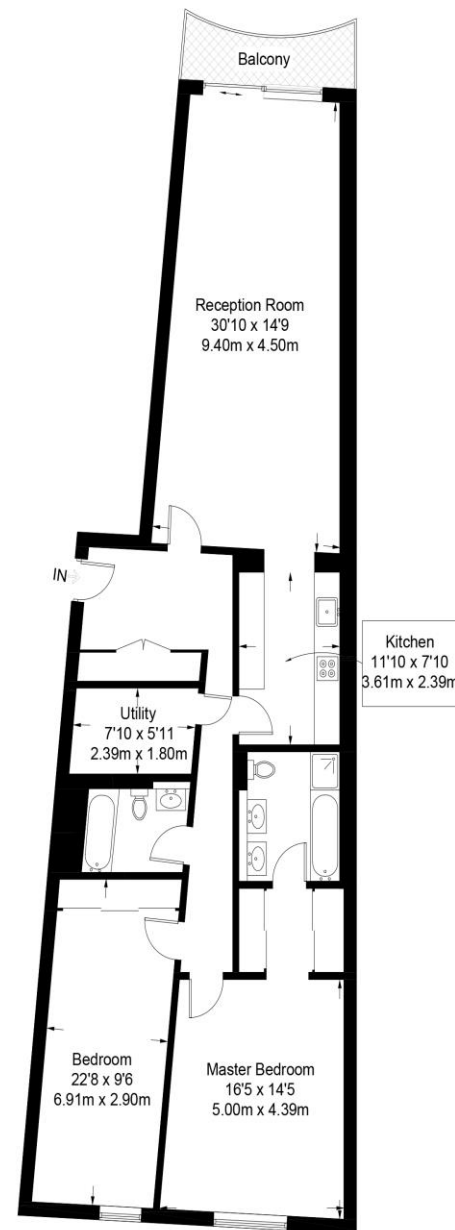


+44 (0)20 7349 7055
sales@jowebster.com
www.jowebster.com

Important Notice
 These sales particulars are believed to be correct, but their accuracy is not guaranteed, nor do they form any part of a contract. We have not carried out a detailed survey nor tested services, appliances or fittings. Purchasers must satisfy themselves by inspection or otherwise.

Albion Riverside

Approximate Gross Internal Area = 1399 sq ft / 130 sq m



Not to scale, for guidance only and must not be relied upon as a statement of fact. All measurements and areas are approximate only and have been prepared in accordance with the current edition of the RICS Code of Measuring Practice.