



Albion Riverside, Battersea, SW11

JOWEBSTER



Albion Riverside, Battersea, SW11

A bright and well-presented fourth floor two-bedroom apartment with glorious views of the River Thames and Albert Bridge. The apartment comprises 1369 sq. ft of living space: the reception room and both bedrooms have floor to ceiling glass doors leading onto the river facing terrace, making this a sought-after apartment in this Foster designed building.

The large open plan kitchen and dining area offers ample space for entertaining and living space. The balcony spans across the front of the property, with access from the bedrooms and living room, with space for outside furniture.

The apartment offers a master bedroom with a generously sized en-suite bathroom with double sinks and a walk-in dressing area; a second bedroom which is also accessed from the reception room and currently used as a second reception room; a guest bathroom and plentiful storage throughout. The apartment is in immaculate condition and finished to a high standard. Additionally, the flat also benefits from one underground car parking space.

Video available on request.

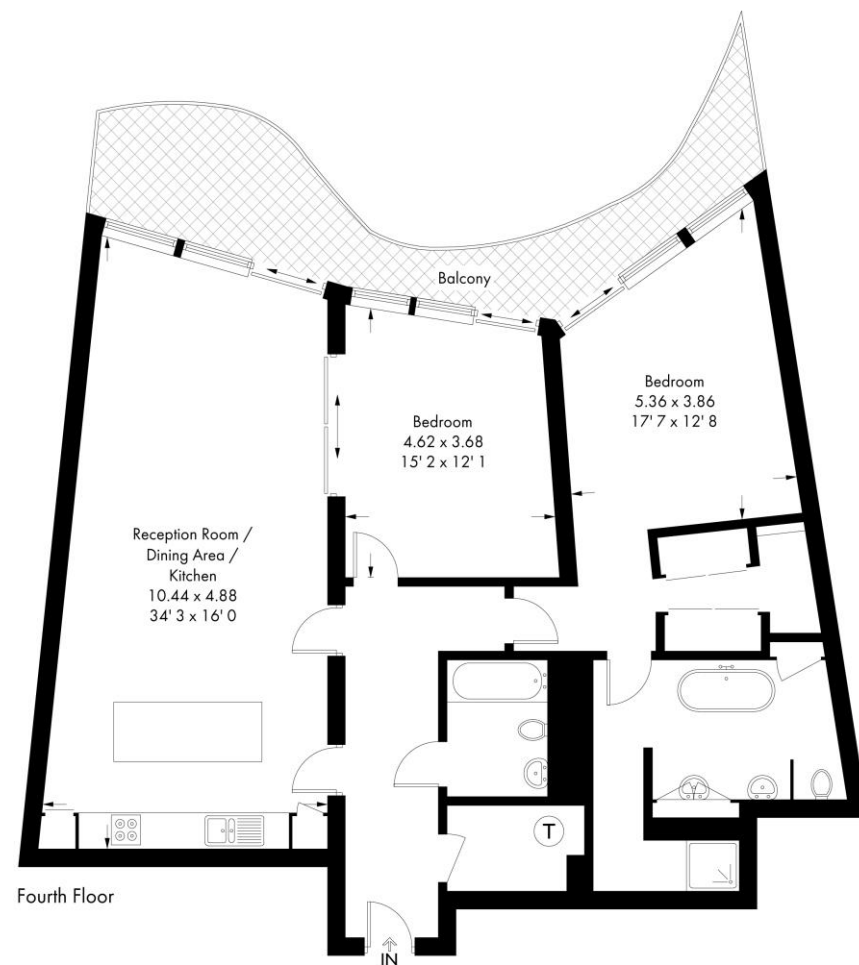
Property Attributes

- Reception Room
- Open Plan Kitchen/ Dining Area
- Two Double Bedrooms
- Master En Suite
- Separate Shower Room
- Underground Car Parking
- Concierge
- 20 metre Swimming Pool
- Gymnasium

Terms

- £1,765,000
- Share of Freehold (999 Years from Sept. '91)
- Borough of Wandsworth
- Estimated Service Charge £19,167.24 per annum
- Council Tax Band G

Albion
Approximate Gross Internal Area = 1369 sq ft / 127.2 sq m



This plan is not to scale and must be used as layout guidance only. All measurements and areas are approximate and should not be relied upon to provide accurate information. This plan must not be relied upon when making property valuations, design considerations or any other such relevant decisions. We accept no responsibility or liability (whether in contract, tort or otherwise) in relation to any loss whatsoever arising from or in connection with any use of this plan or the adequacy, accuracy or completeness of it or any information within it.

+44 (0)20 7349 7055
sales@jowebster.com
www.jowebster.com

Important Notice
These sales particulars are believed to be correct, but their accuracy is not guaranteed, nor do they form any part of a contract. We have not carried out a detailed survey nor tested services, appliances or fittings. Purchasers must satisfy themselves by inspection or otherwise.