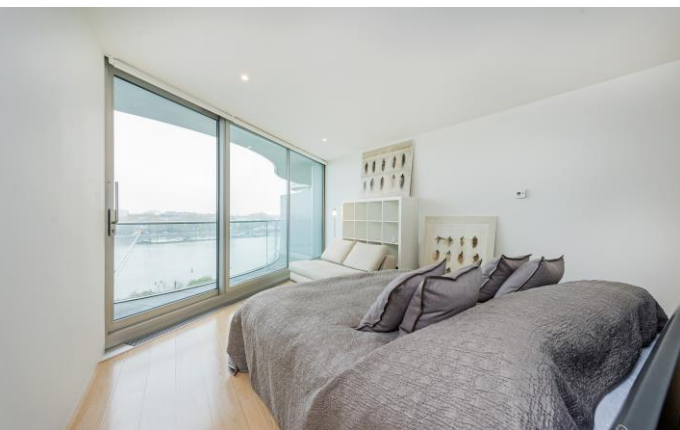




Albion Riverside, Battersea, SW11

JOWEBSTER



Albion Riverside Battersea, SW11

A stunning two bedroom riverside apartment on the fifth floor of Albion Riverside with river views throughout. Comprising 1,340 square feet (124.5 square meters), this stunning apartment offers an excellent living space with a modern open plan kitchen and reception room leading out to a riverside balcony along with two bedrooms and two bathrooms (one en-suite).

Albion Riverside is an award winning Foster and Partners development on the south bank of the river Thames, This prestigious development offers a 24-hour security and concierge service, a resident only swimming pool and gymnasium, podium garden and secure underground parking with direct lift access. It is a short walk from the wonderful green open spaces of Battersea Park and the amenities of the Kings Road.

Property Attributes

- Two Bedrooms
- Two Bathrooms (ne en-suite)
- Open Plan Kitchen and Reception Room
- Riverside Balcony
- Comfort Cooling and Electric Heating
- 24-Hour Security and Concierge Service
- Secure Underground Parking
- Resident Only Swimming Pool and Gymnasium
- Podium Gardens
- Lift Access

Terms

- £1,895,000
- Leasehold (989 Years from Sept.'03)
- Royal Borough of Kensington & Chelsea
- Service Charge £8861 p.a (2020)
- Ground Rent £275 p.a (2020)

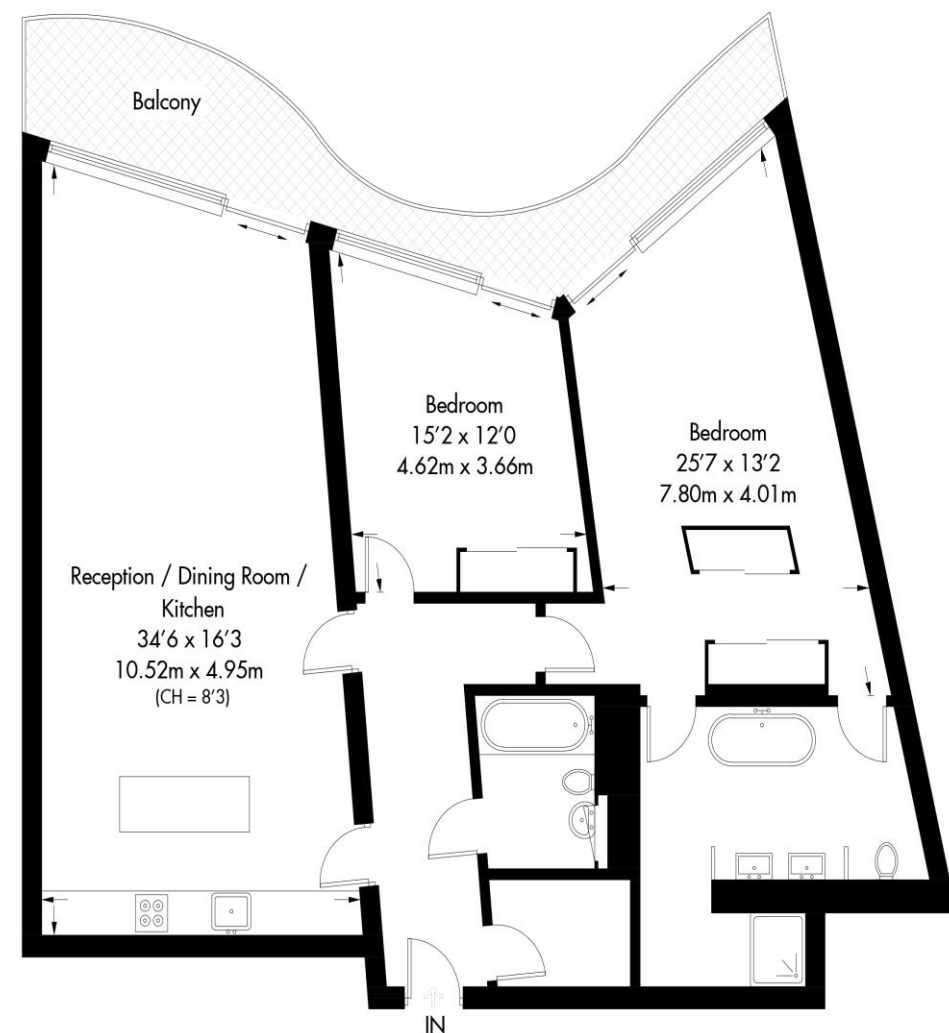
+44 (0)20 7349 7055
sales@jowebster.com
www.jowebster.com

Important Notice

These sales particulars are believed to be correct, but their accuracy is not guaranteed, nor do they form any part of a contract. We have not carried out a detailed survey nor tested services, appliances or fittings. Purchasers must satisfy themselves by inspection or otherwise.

Albion Riverside

Approximate Gross Internal Area = 1340 sq ft / 124.5 sq m



Fifth Floor

Not to scale, for guidance only and must not be relied upon as a statement of fact. All measurements and areas are approximate only and have been prepared in accordance with the current edition of the RICS Code of Measuring Practice.