

Albion Riverside, Battersea, SW11

JOWEBSTER





Albion Riverside, Battersea , SW11

A spacious two bedroom apartment on the second floor of this iconic riverside development.

The property comprises 943 sq.ft. (87 sq.m.) and has two double bedrooms and two bathrooms (one en-suite) with an open plan kitchen incorporating a breakfast bar. The adjoining reception room has a full wall of glazing facing towards Battersea Park and Ransoms Dock. The principle rooms all benefit from automatic air conditioning as well as trench heating. The apartment further benefits from ample internal storage and one allocated underground car parking space.

Albion Riverside is located on the river Thames between Battersea Bridge and Albert Bridge. The development offers 24 hour security and concierge facilities, a residents only gymnasium, swimming pool and communal gardens. The wonderful green open spaces of Battersea Park can be found nearby.

Property Attributes

- 2 Bedrooms
- Bathroom (En-Suite)
- Shower Room
- Open-Plan Kitchen/Reception Room
- Storage/Utility Cupboards
- Automatic Air Conditioning and Trench Heating
- Underground Car Parking Space
- 24 Hour Security & Concierge
- Gymnasium & Swimming Pool (Residents Only)
- Podium Garden

Terms

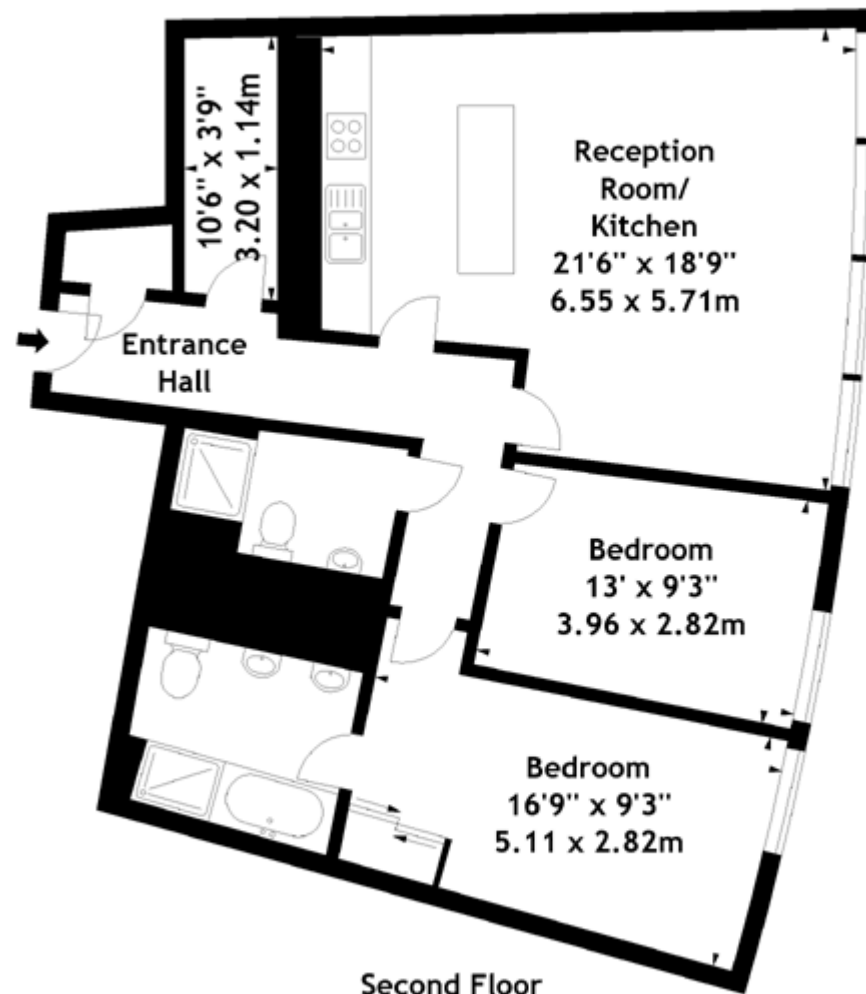
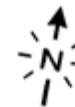
- £775,000
- Leasehold (999 Years from Sept.'91)
- Borough of Wandsworth
- Service Charge £7,800 pa (Approx. 2025)
- Ground Rent £200 pa (Approx. 2025)
- Council Tax Band F

+44 (0)20 7349 7055
sales@jowebster.com
www.jowebster.com

Important Notice

These sales particulars are believed to be correct, but their accuracy is not guaranteed, nor do they form any part of a contract. We have not carried out a detailed survey nor tested services, appliances or fittings. Purchasers must satisfy themselves by inspection or otherwise.

Albion Riverside, SW11
 Approx. Gross Internal Area
 943 Sq Ft - 87.60 Sq M



Measured in accordance with RICS guidelines. Every attempt is made to ensure accuracy, however all measurements are approximate. This floor plan is for illustrative purposes only and is not to scale.