

Damac Tower, Nine Elms, SW8

Approximate gross internal area

311.59 sq m / 3354 sq ft

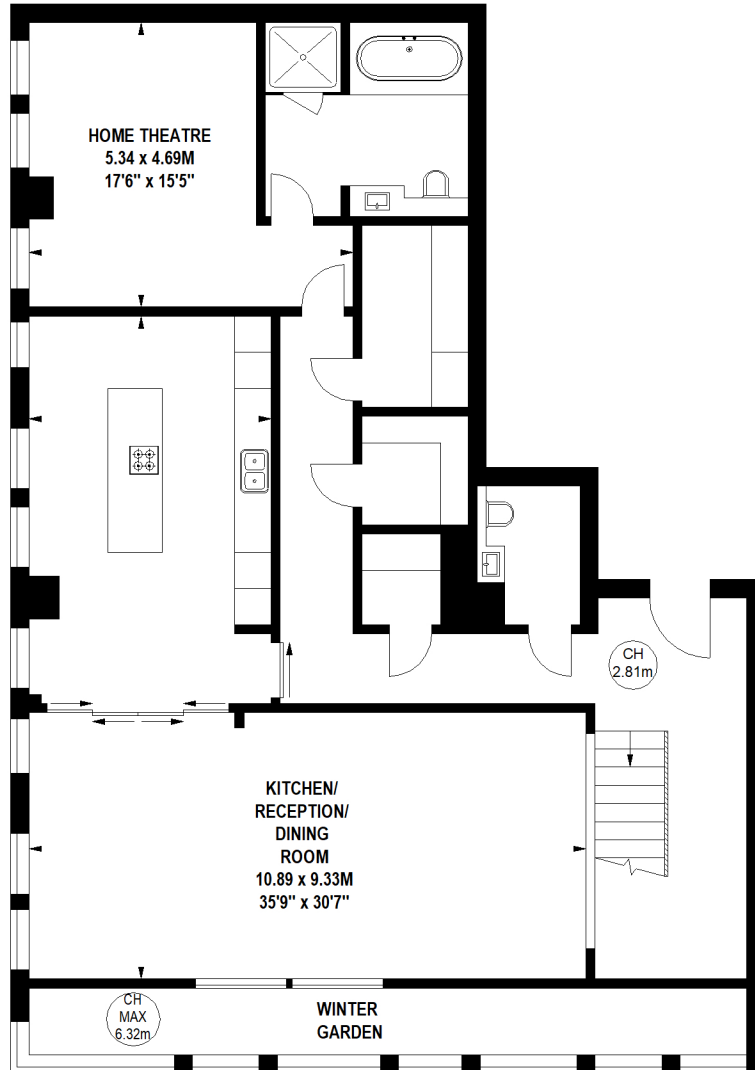
(Including Winter Garden)

Winter Garden

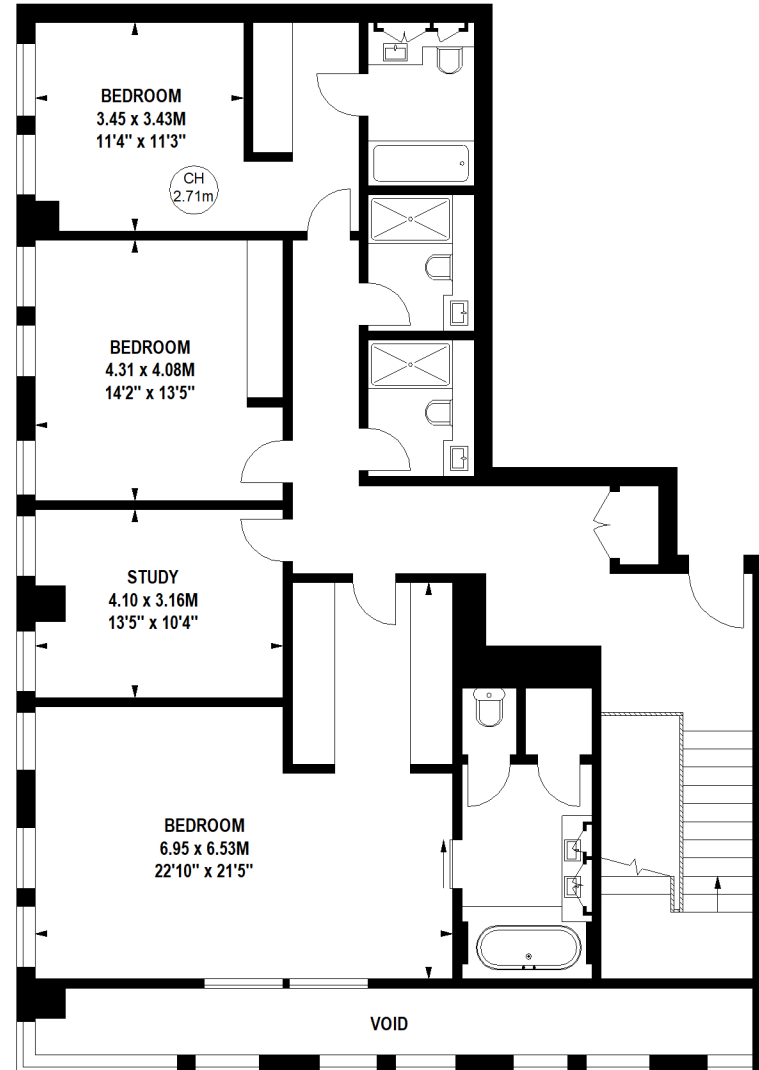
13.01 sq m / 140 sq ft

Key :

CH - Ceiling Height



Level Forty Nine



Level Fifty

Not to scale, for guidance only and must not be relied upon as a statement of fact.
All measurements and areas are approximate only