

Damac Tower, Nine Elms, SW8

Approximate gross internal area

131.17 sq m / 1412 sq ft

(Including Winter Garden)

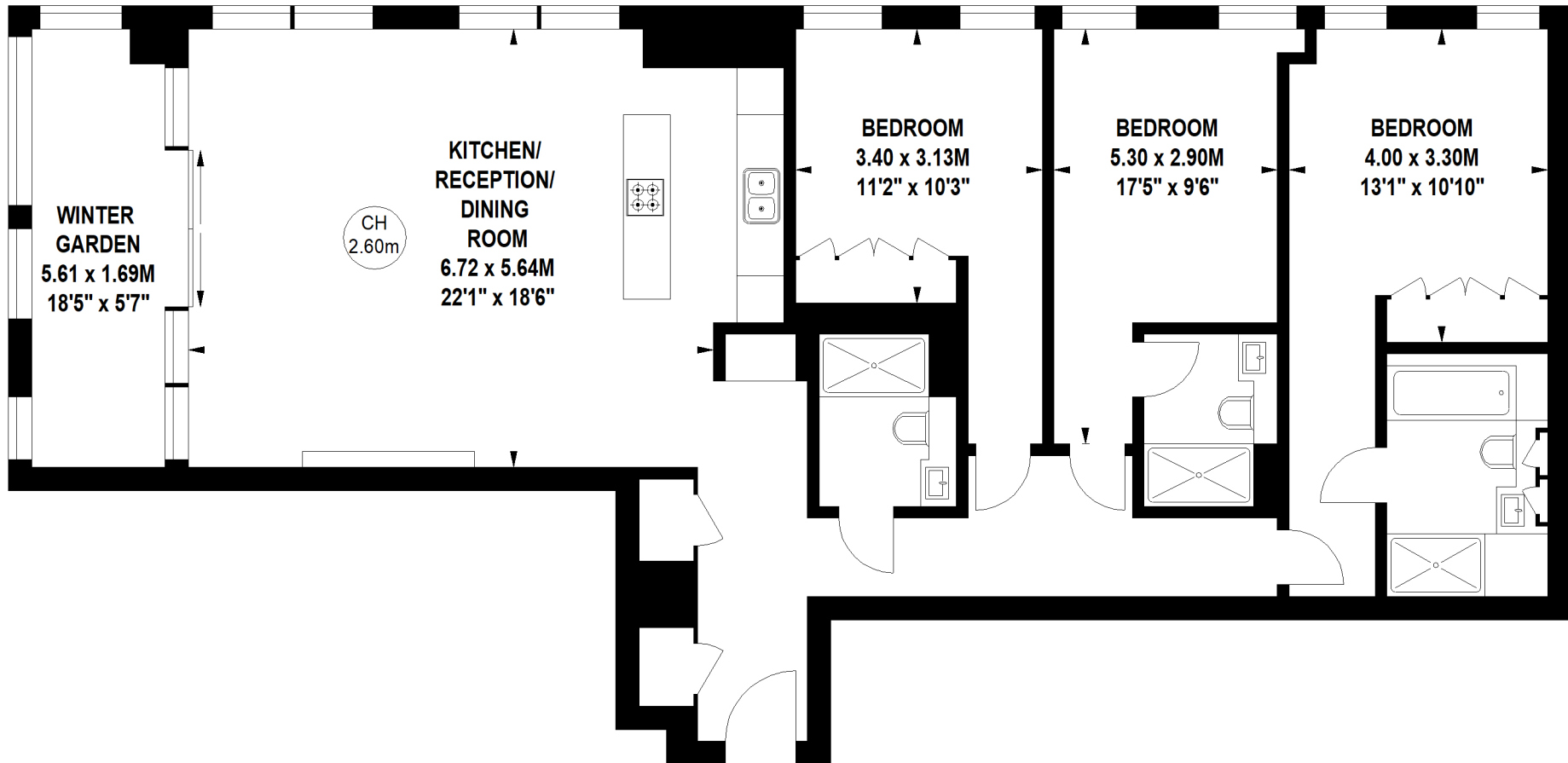
Winter Garden

9.48 sq m / 102 sq ft



Key :

CH - Ceiling Height



Forty-Fourth Floor

Not to scale, for guidance only and must not be relied upon as a statement of fact.

All measurements and areas are approximate only