



Flat 7, 86 Addison Road, Holland Park, London W11

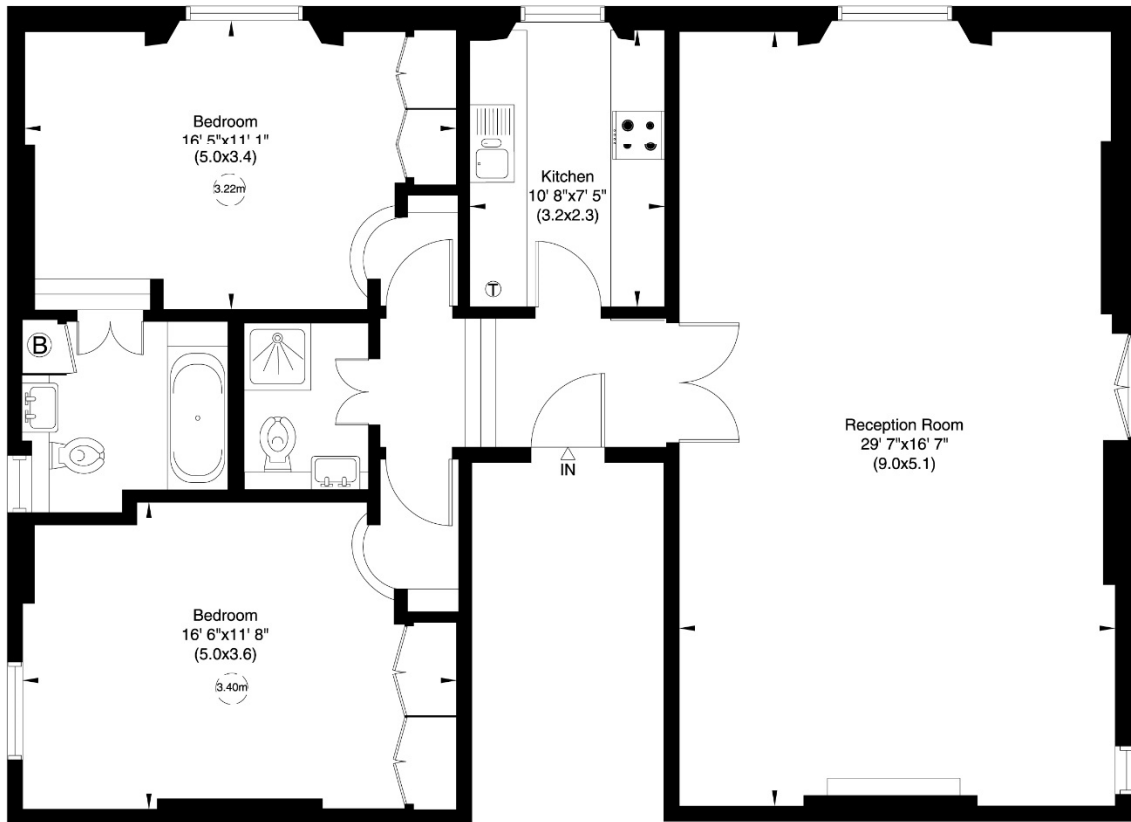
# 7, 86 Addison Road, W14

Gross internal area (approx.)

1118 Sq ft (104 Sq m)

For identification only, Not to Scale

Floor Plan by **capital group** 020 8671 7722



Second Floor

Not to scale, for guidance only and must not be relied upon as a statement of fact. All measurements and areas are approximate only (and have been prepared in accordance with the current edition of the RICS Code of Measuring Practice).

Flat 7, 86 Addison Road, Holland Park, London, W14 8ED

A spacious and recently refurbished two bed 2nd floor with wonderful proportions and generous room sizes and access to a communal garden.

Available Unfurnished

EPC Rating: -E

Royal Borough Of Ken & Chelsea

Price £850 pw



**JOHN WILCOX**  
& Co.

020 7602 2352

[www.johnwilcoxandco.com](http://www.johnwilcoxandco.com)

For Clarification purposes we wish to inform all interested parties that we have prepared these particulars as a general guide. We have not carried out a detailed survey nor tested the services, appliances and specific fittings. Room sizes should not be relied upon for carpets and furnishings