

JOHN WILCOX & Co.

ESTATE AGENTS AND VALUERS

**An elegant two double bedroom apartment
presented in excellent condition**

**FIRST FLOOR FLAT (FLAT F)
47 MELBURY ROAD, KENSINGTON W14**



**Reception room; Fitted kitchen, Two double bedrooms;
Bathroom, Off street parking (1st come 1st served)**

Price £795 per week Unfurnished

IMPORTANT INFORMATION ABOUT OUR FEES - When you rent a property via us, we will charge each tenant a one-off admin fee of £120 including VAT. Other fees may apply. For more information about our fees and how they are calculated please visit www.johnwilcox.co.uk/tenantsfees

Presented in excellent condition, a fantastic two bedroom first floor flat at the rear of this lovely building and overlooking the lovely communal garden

47 Melbury Road is a beautiful red-brick building just off Kensington High Street and almost next to the entrance to Holland Park. There is off street parking to the rear available on a first come first served basis

The accommodation comprises:

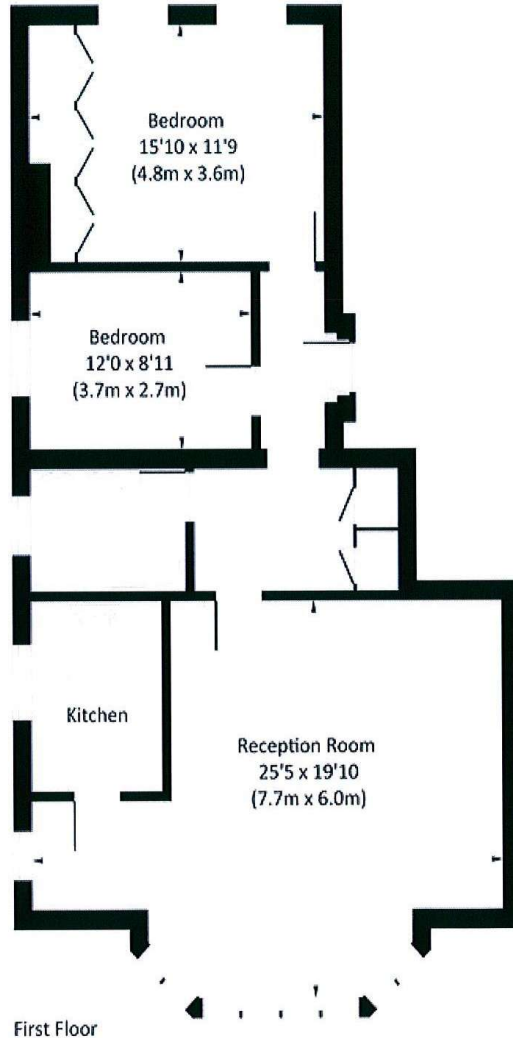
- 936 sq ft / 87 sq m
- Good size reception room overlooking the pretty communal garden
- Fully fitted kitchen
- Two double bedrooms
- Bathroom
- Off street parking on a first come first served basis.



MELBURY ROAD, W14

Approx. gross internal area

936 Sq Ft. / 87 Sq M.



First Floor



All measurements are approximate and for illustration purposes only as defined by the RICS Code of Measuring Practice © 2014
Dowling Jones Design www.dowlingjones.com 020 7610 5633

EPC RATING: D

Important Notice

For clarification purposes we wish to inform all interested parties that we have prepared these particulars as a general guide. We have not carried out a detailed survey nor tested the services, appliances and specific fittings. Room sizes should not be relied upon for carpets and furnishings