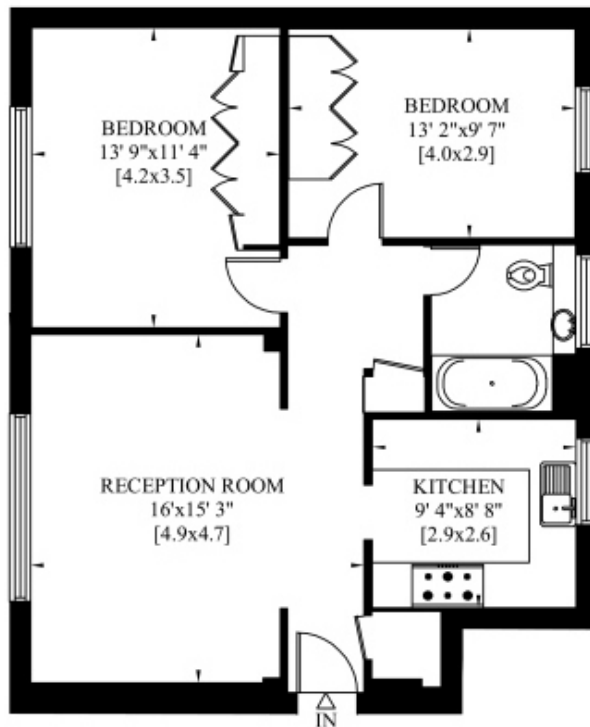




1 Parkland Court, Addison Road, Holland Park W11

PARKLAND COURT
ADDISON ROAD
LONDON W14

Gross Internal Area: 68 Sq. metres
730 Sq. feet



GROUND FLOOR

1 Parkland Court, Addison Road, Holland Park, London, W14 8AN

A fantastic two bedroom ground floor flat with a patio, conveniently located for the amenities of Holland Park Avenue

Available Unfurnished

EPC Rating: -D

Royal Borough Of Ken & Chelsea

Price £550 pw



For Clarification purposes we wish to inform all interested parties that we have prepared these particulars as a general guide. We have not carried out a detailed survey nor tested the services, appliances and specific fittings. Room sizes should not be relied upon for carpets and furnishings

JOHN WILCOX
& Co.
020 7602 2352
www.johnwilcoxandco.com