

# Woodsford Square, W14 (as previously furnished)





# Woodsford Square, W14

A superb five-bedroom family home on four floors with integral garage and a parking space. The house has in recent years been fully refurbished, is well laid out and is ready to move in to.

The ground floor has an integral garage, with utility room and w/c. A garden room to the rear opens out onto the east facing garden, with direct access to the communal gardens. A bright first floor reception room overlooks the gardens to the rear, with the kitchen at the front. Five bedrooms and three bathrooms completes the family-friendly layout.

Woodsford Square is an extremely popular and award-winning development of town houses. It is located towards the northern end of the prestigious Addison Road, and Holland Park Avenue with its many cafés, shops and restaurants is moments away as is Westfield and the open spaces of Holland Park.

## Terms

<b>Rent</b>	£11,266.67 per month
<b>Council Tax Band</b>	H
<b>EPC Rating</b>	C
<b>Availability</b>	Now
<b>Furniture</b>	Unfurnished

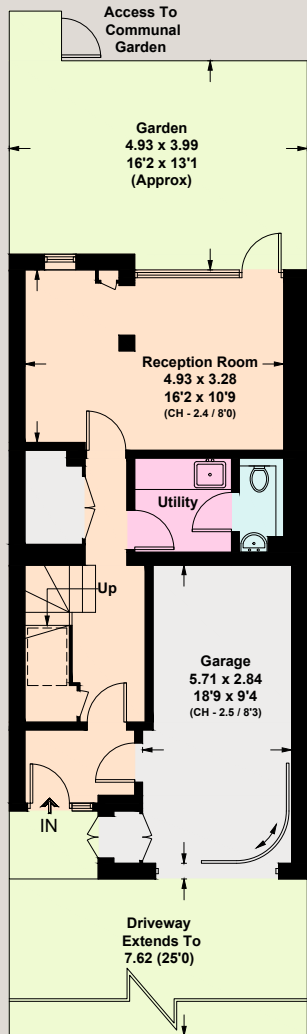




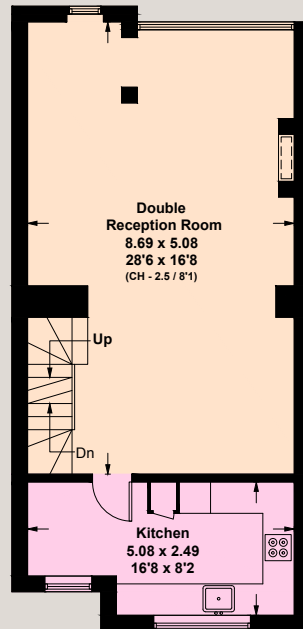




**Approx. Gross Internal Area**  
 210.4 sq m / 2265 sq ft  
 Including Limited Use Area (4.7 sq m / 50 sq ft) and Garage

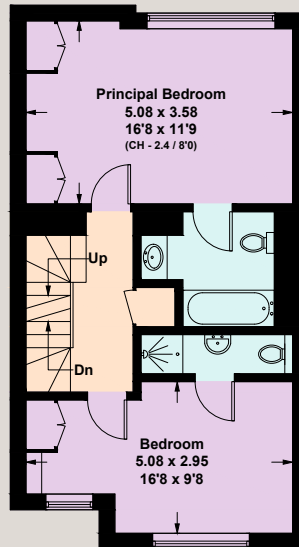


**Ground Floor**

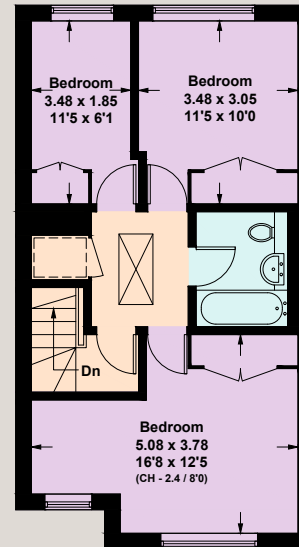


**First Floor**

= Reduced head height below 1.5m



**Second Floor**



**Third Floor**



For clarification purposes we wish to inform all interested parties that we have prepared these particulars as a general guide. We have not carried out a detailed survey nor tested the services, appliances and specific fittings. Room sizes should not be relied upon for carpets and furnishings