



Holland Park Avenue

Holland Park, W11

Holland Park Avenue

Holland Park, W11

A SPACIOUS ONE BEDROOM, LOWER GROUND FLOOR FLAT IN NEED OF MODERNISATION.

The flat extends to 920 sq ft and is located in a handsome Grade II* building on Holland Park Avenue - an extension of the A40.

Holland Park Avenue benefits from the numerous shops, restaurants and cafés and the excellent transport links into Central London (Central Line) as well as Shepherd's Bush station and the shopping facilities of Westfield Shopping Centre. The open spaces of Holland Park are a short walk away.

The accommodation comprises

- Large reception room
- Spacious hall
- Double bedroom
- Utility room
- Kitchen

Terms

Tenure Leasehold 59 years remaining unexpired

Service Charge TBA

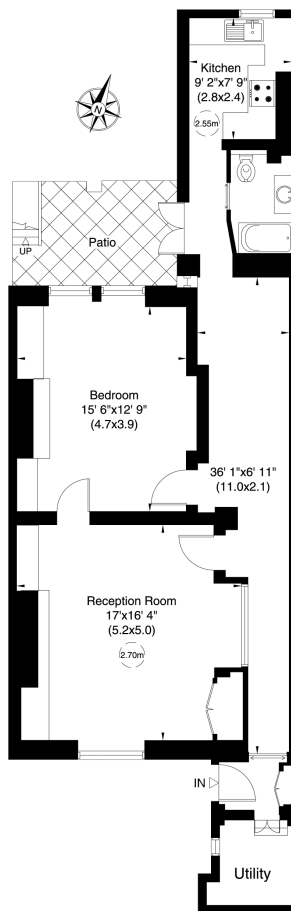
Ground Rent £25 per annum

EPC Rating E

Local Authority The Royal Borough of Kensington and Chelsea

Price £650,000 Subject to Contract

Approx. Gross Internal Area
920 sq ft (85 sq m)



Lower Ground Floor



See all our properties at


JOHN WILCOX
& Co.

020 7602 2352

www.johnwilcox.co.uk

For clarification purposes we wish to inform all interested parties that we have prepared these particulars as a general guide. We have not carried out a detailed survey nor tested the services, appliances and specific fittings. Room sizes should not be relied upon for carpets and furnishings