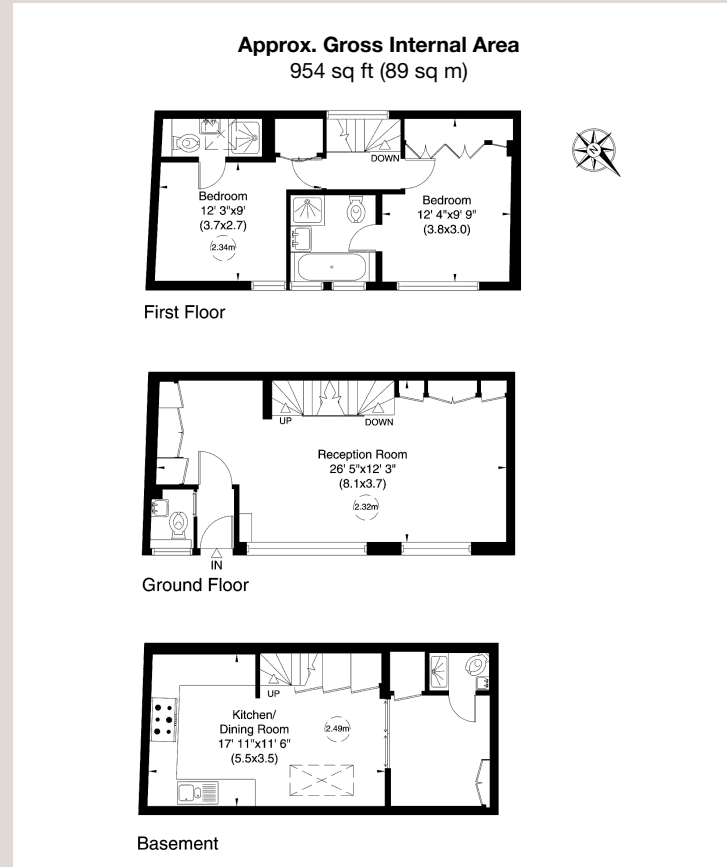




Addison Place

Holland Park, W11



Addison Place, Holland Park, W11

Beautifully presented and exquisitely designed, a completely re-imagined mews house from Nest Designers, providing three floors of immaculate accommodation in the heart of Holland Park. With two floors of living and entertaining space, and the top floor offering two en-suite bedrooms, the house lacks for nothing, and can even provide extra guest accommodation on the lower ground if required.

Addison Place is a quiet backwater located just off Addison Avenue. It is tremendously located for shops, transport links and the cafe culture on Holland Park Avenue, the open spaces of Holland Park itself and also the Westfield shopping complex - all of which are within a few minutes' walking distance.

Terms

Tenure Freehold

EPC Rating D

Local Authority The Royal Borough of Kensington and Chelsea

Price £1,625,000 Subject to Contract

For clarification purposes we wish to inform all interested parties that we have prepared these particulars as a general guide. We have not carried out a detailed survey nor tested the services, appliances and specific fittings. Room sizes should not be relied upon for carpets and furnishings

JOHN WILCOX
& Co.

020 7602 2352

www.johnwilcox.co.uk