

Sinclair Gardens, W14



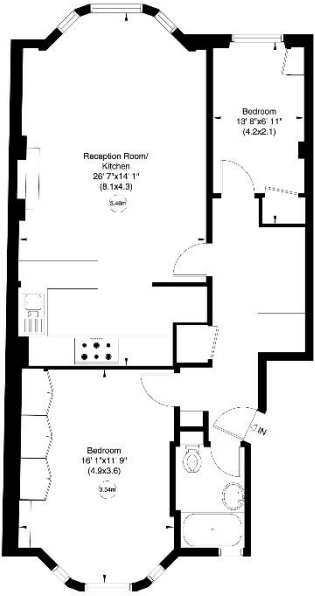


Sinclair Gardens, W14

Gross internal area (approx.)
73 Sq ft (787 Sq m)

For identification only, Not to Scale

Floor Plan by **capital group** 020 8671 7722



Ground Floor

Not to scale, for guidance only and must not be relied upon as a statement of fact. All measurements and areas are approximate only (and have been prepared in accordance with the current edition of the NIS Code of Measuring Practice).



Sinclair Gardens

A two bedroom apartment period conversion on the raised ground floor of a smart Victorian block on Sinclair Gardens, W14. An open plan reception room/kitchen is at the front of the apartment, with two bedrooms and a bathroom to the rear. The apartment is ideally positioned for the transport links of Shepherds Bush just a short walk away, as well as the shopping, restaurants and bars of Westfield.

Tenure

Local Authority Royal Borough of Kensington & Chelsea

EPC C

Council Tax Band D

Available from 22nd July 2025

Rent £575 per week

£2492 per calendar month

JOHN WILCOX
& Co.

020 7602 2352

www.johnwilcox.co.uk

For clarification purposes we wish to inform all interested parties that we have prepared these particulars as a general guide. We have not carried out a detailed survey nor tested the services, appliances and specific fittings. Room sizes should not be relied upon for carpets and furnishings