



6 Darnley Terrace, Holland Park, W11 4RL

# Darnley Terrace, W11

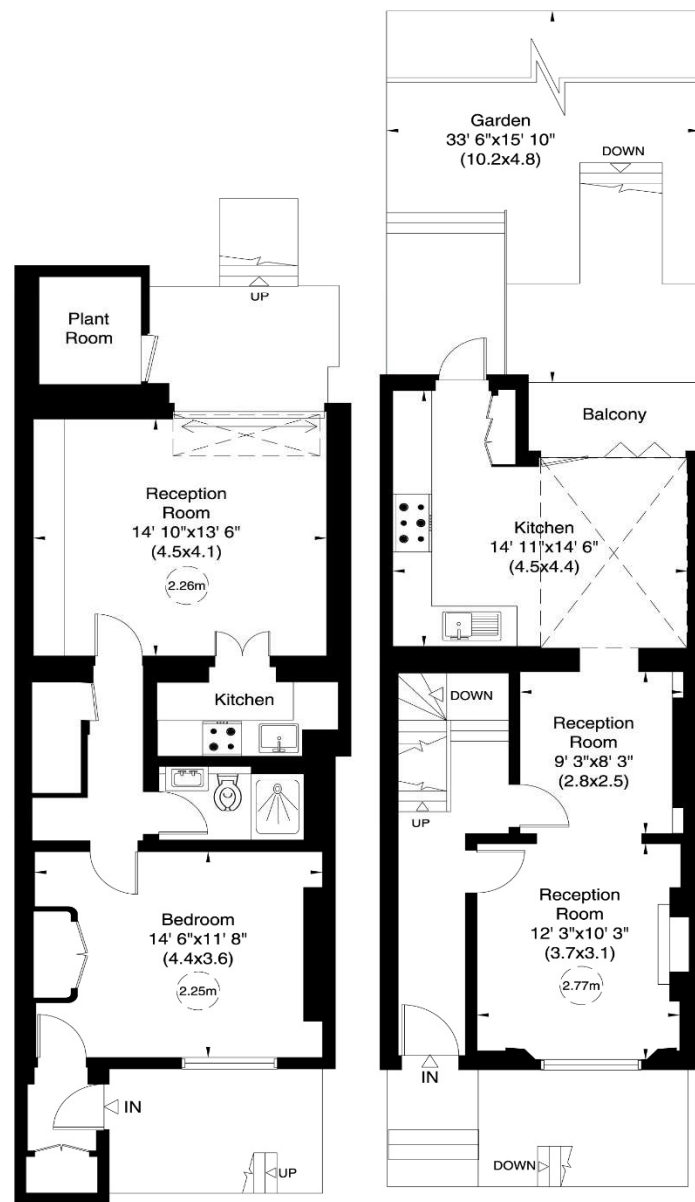
Gross internal area (approx.)

1,749 Sq ft (162 Sq m) Including Plant Room

1,717 Sq ft (160 Sq m) Excluding Plant Room

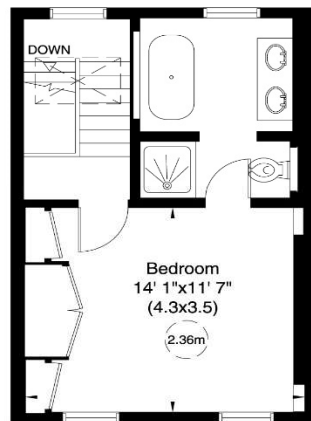
For identification only, Not to Scale

Floor Plan by **capital group** 020 8671 7722

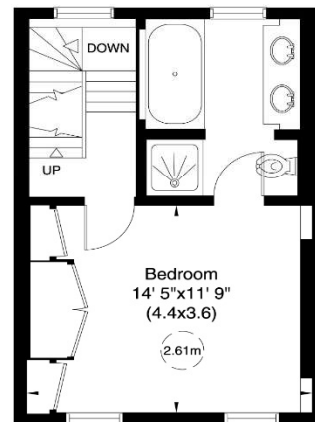


Lower Ground Floor

Raised Ground Floor



Second Floor



First Floor

6 Darnley Terrace, Holland Park, W11 4RL

An end of terrace Victorian family house arranged over four floors with a beautifully maintained 50ft rear garden.

Available Unfurnished

Royal Borough Of Ken & Chelsea

Price £1,800 pw



Not to scale, for guidance only and must not be relied upon as a statement of fact. All measurements and areas are approximate only (and have been prepared in accordance with the current edition of the RICS Code of Measuring Practice).

For Clarification purposes we wish to inform all interested parties that we have prepared these particulars as a general guide. We have not carried out a detailed survey nor tested the services, appliances and specific fittings. Room sizes should not be relied upon for carpets and furnishings

**JOHN WILCOX**  
& Co.

020 7602 2352

[www.johnwilcoxandco.com](http://www.johnwilcoxandco.com)