



Flat 7 40 Holland Park, London W11 3RP



# Holland Park, W11

Approx. Gross Internal Area 516 Sq Ft - 47.94 Sq M

Flat 7 40 Holland Park, London, W11 3RP

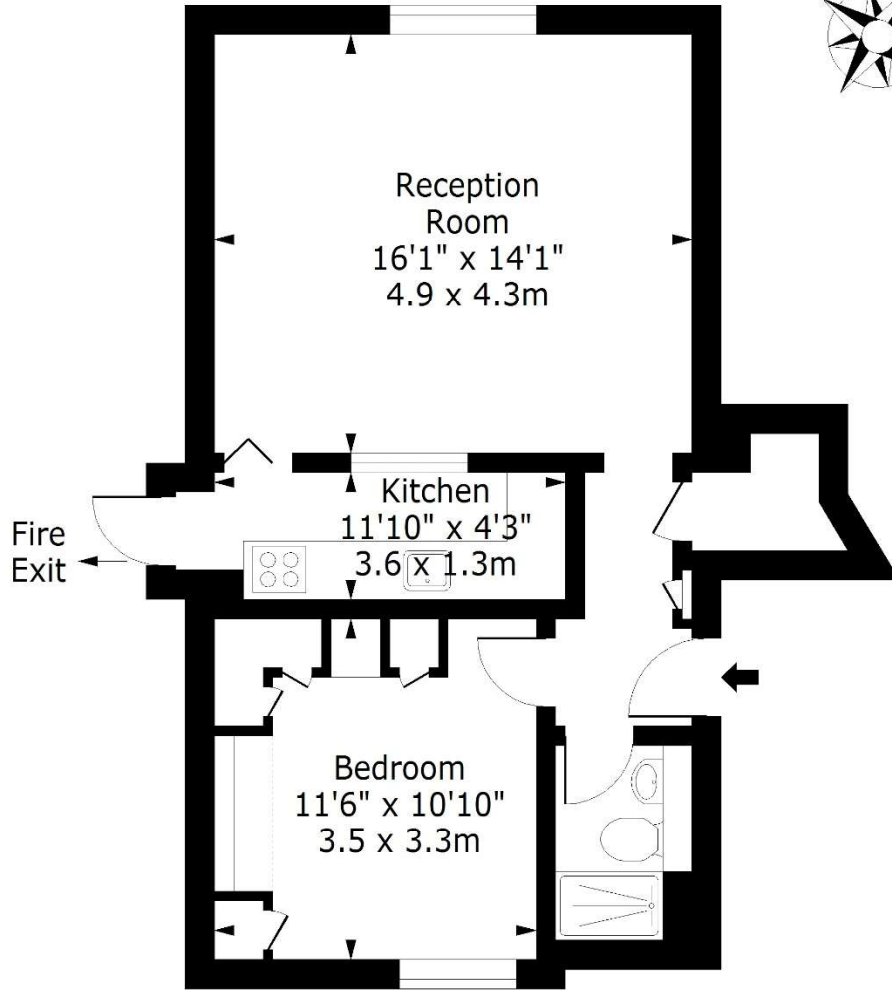
Charming one double bedroom flat in a beautiful period building superbly located

Unfurnished

EPC Rating: -E

Royal Borough Of Ken & Chelsea

Price £475 pw



## Second Floor

Floor Area 516 Sq Ft - 47.94 Sq M

For Illustration Purposes Only - Not To Scale

[www.lpaplus.com](http://www.lpaplus.com)

For Clarification purposes we wish to inform all interested parties that we have prepared these particulars as a general guide. We have not carried out a detailed survey nor tested the services, appliances and specific fittings. Room sizes should not be relied upon for carpets and furnishings

JOHN WILCOX  
& Co.

020 7602 2352

[www.johnwilcoxandco.com](http://www.johnwilcoxandco.com)