



Holland Park Mews

W11

Holland Park Mews, W11

An utterly indulgent two bedroom mews house with a home office in one of West London's premier locations. Designed and finished to an impeccable standard, the property features wide and open reception space with a good sized kitchen and separate office on the 1st floor, and two double bedrooms and bathrooms on the ground floor.

Holland Park Mews is a tremendously quiet street and is only moments away from the Underground station and the shops, restaurants and many cafés on Holland Park Avenue. Holland Park itself is just next door and Westfield and Notting Holland Gate are only a short walk away

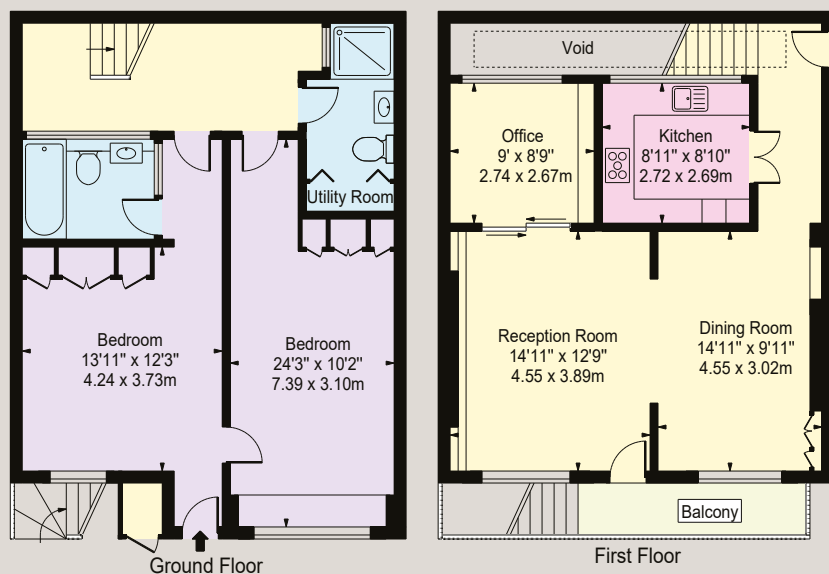
Rent: £5,200 per month

EPC Rating: D

Council Tax: Band H

Available: Mid-July

Approx. Gross Internal Area
1,296 sq ft (120.40 sq m)



For clarification purposes we wish to inform all interested parties that we have prepared these particulars as a general guide. We have not carried out a detailed survey nor tested the services, appliances and specific fittings. Room sizes should not be relied upon for carpets and furnishings

JOHN WILCOX
& Co.

020 7602 2352

www.johnwilcox.co.uk