



**Pennard Road**  
Shepherds Bush, W12

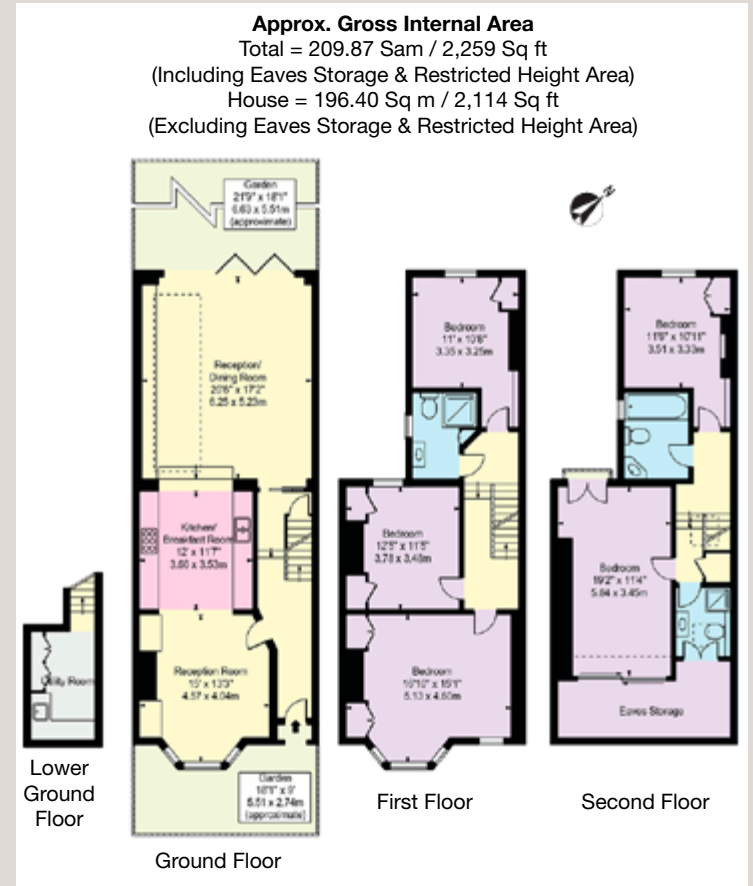


# Pennard Road

## Shepherds Bush, W12

Full of character and arranged over three stories, this is an ideal family home with a huge family room leading out to a pretty rear garden, county style kitchen and separate dining room. There are five double bedroom and three bathrooms upstairs and a utility room in the basement. The house is tube affected with the underground line to the rear of the house

Located on a residential one way street, convenient for access to local transport, shopping and leisure facilities at Shepherd's Bush Green with broader facilities being found at Westfield.



### Terms

Available Unfurnished

**EPC Rating B**

**Local Authority** London Borough of Hammersmith & Fulham

**Price** £1,300pw

For clarification purposes we wish to inform all interested parties that we have prepared these particulars as a general guide. We have not carried out a detailed survey nor tested the services, appliances and specific fittings. Room sizes should not be relied upon for carpets and furnishings

**JOHN WILCOX**  
 & Co.

**020 7602 2352**

[www.johnwilcox.co.uk](http://www.johnwilcox.co.uk)