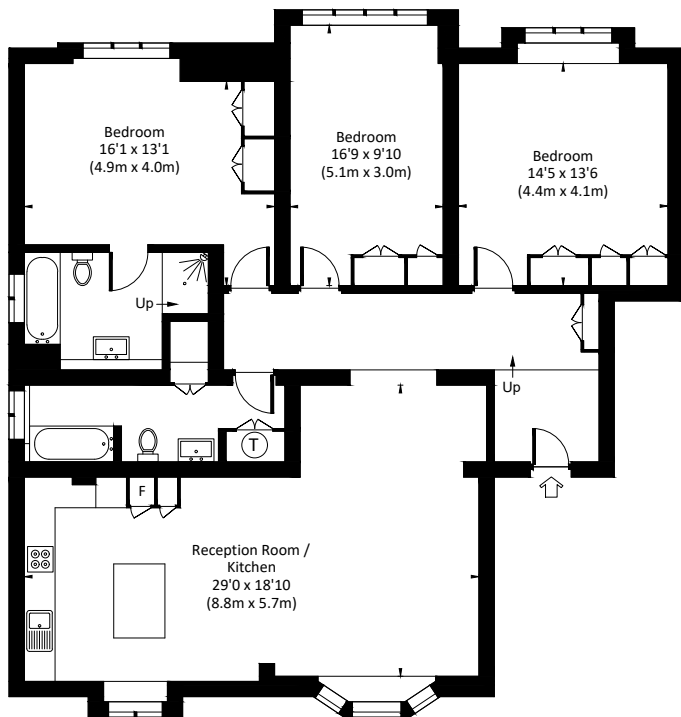




Holland Park Road, W14

Approx. Gross Internal Area
1,444 sq ft (134.2 sq m)



FIRST FLOOR



PET FRIENDLY - On the 1st floor, a lovely three double bedroom unfurnished flat just behind Kensington High Street with access to a secluded communal garden behind the building.

The accommodation comprises

- Three double bedrooms
- Two full bathrooms (one en-suite)
- Large reception room with open plan kitchen
- Lovely communal garden
- Available now - unfurnished

Terms

Rent: £7,150 per calendar month / £1,650 per week

Furniture: Unfurnished

Availability: Now

EPC Rating: C

Council Tax: Band G

For clarification purposes we wish to inform all interested parties that we have prepared these particulars as a general guide. We have not carried out a detailed survey nor tested the services, appliances and specific fittings. Room sizes should not be relied upon for carpets and furnishings

JOHN WILCOX
& Co.

020 7602 2352

www.johnwilcox.co.uk