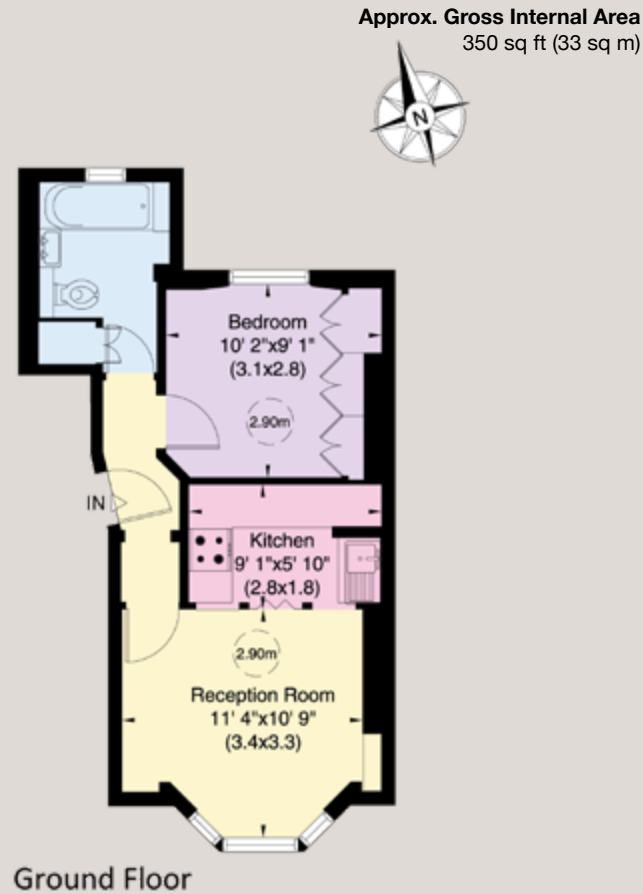




Disraeli Road

SW15



Disraeli Road, SW15

A compact one bedroom apartment on the raised ground floor of a Victorian building close to Putney High Street. With a double bedroom overlooking the rear, kitchen, reception room and bathroom, the apartment is ideally positioned for the excellent shops, restaurants and cafes nearby, and the transport links in and out of town.

Terms

Tenure	Leasehold, a new 999 year lease to be granted
Local Authority	London Borough of Wandsworth
EPC Rating	D
Council Tax Band	C
Listing	Not Listed
Construction	Standard
Conservation Area	No
Parking	On street permit parking
Price	£395,000 subject to contract

For clarification purposes we wish to inform all interested parties that we have prepared these particulars as a general guide. We have not carried out a detailed survey nor tested the services, appliances and specific fittings. Room sizes should not be relied upon for carpets and furnishings

JOHN WILCOX
& Co.

020 7602 2352

www.johnwilcox.co.uk